

Shoot Stunning Videos with Sony Professional Handycam



While efforts have been made to provide accurate information, there could be printing errors, which may have crept in. In the event of any discrepancy, the product Operating Instruction supplied with product shall be the authentic reference point. All MRP inclusive of all taxes. Price quoted is for One Unit of Product.

For sales and service queries, call 1800-103-7799 (Toll Free) or e-mail us at sonyindia.care@ap.sony.com. Visit us at www.sony.co.in. Please write to b2bindia@ap.sony.com for corporate enquiries.

SONY
make.believe



DSLT

The future of DSLR is translucent.

Translucent
Mirror Technology™
Sony interchangeable lens camera

For more information log on to
www.sony.co.in/alpha or www.facebook.com/sonyindia



Translucent Mirror Technology™



Conventional SLR



Sony DSLT

Best Imaging Innovation:
Sony SLT, Translucent
Mirror Technology

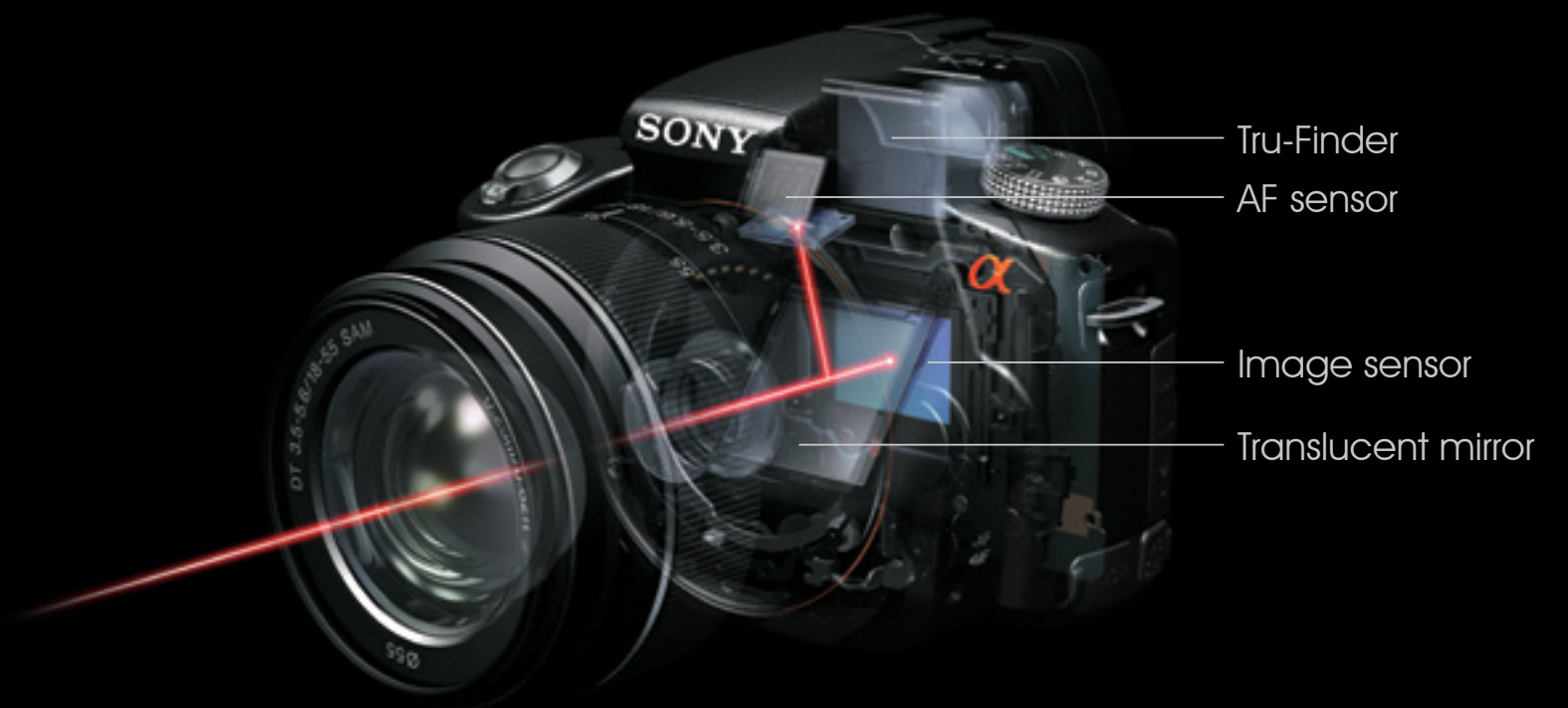


In conventional DSLRs when the shutter button is pressed, mirror is usually lowered and distance is measured using light reflected off sub-mirror. Mirror rises just before shutter is released to expose the image sensor to light. Due to the physical action of 'Mirror Flipping', there is limitation to the speed of operation in the DSLR. Also as the Mirror rises, Auto Focus does not work during exposure. Similarly, AF is unavailable during Video and Live - View shooting as well. Some DSLRs shift to limited manual focus or Contrast Detection system during this time.

On the other hand, in Sony SLTs, thanks to the newly incorporated Translucent Mirror Technology, mirror operation is no longer required. When picture is clicked, the Translucent Mirror does not flip and it lets light pass through to the sensor. Only shutter is released & brilliant pictures are captured. This makes it many-fold faster than any conventional DSLRs in the category. Also AF is always achieved at a high speed and is highly accurate because light is always guided to the top AF sensor whether shooting stills, movies or in Live View. The camera has been downsized by the elimination of mirror drive mechanisms and the improved freedom with parts layout. Clear images can be seen both in the viewfinder and LCD because highly detailed images captured by the main image sensor can be used as live view images.

Translucent Mirror Technology for Full-time Continuous AF

Translucent Mirror Technology is an exclusive new-generation Sony technology that enables high-speed, high-precision, phase-detection AF to be used for both still-photo and Full HD movie shooting, via either the finder or LCD monitor.



UNLEASH YOUR FULL CREATIVE POTENTIAL

Translucent
Mirror Technology™

* Effective pixels (approx.)
 ** NTSC (PAL)
 *** Among interchangeable-lens cameras with an APS-C sensor as of August 2011.
 ^ In Tele-zoom Continuous Advance Priority AE mode



SPECIAL REGISTRATION OFFER

SLT-A77

Get free

Screen Protector Sheet Worth Rs. 490/-

For more information, visit: www.sony.co.in/registration

α77

Effective 24.3 MEGA PIXELS

upto 12FPS

Full HD 1080

- Ultra-high resolution 24.3-megapixel* Exmor™ APS HD CMOS sensor
- World's fastest*** continuous shooting up to 12 fps with Full-time Continuous Auto Focus
- AVCHD Ver. 2.0 (Progressive) Full HD Movie at 60p (50p)**
- 19-point AF System with 11 cross sensors
- World's first*** XGA OLED Tru-Finder viewfinder
- 1/8000 sec. shutter speed and approx. 150,000 shutter release durability

APS-C SENSOR



SLT-A77 MRP Rs.99,990/- with SAL16105 lens

SLT-A77 MRP Rs.89,990/- with SAL18135 lens

SLT-A77 MRP Rs.69,990/- Body only

APS-C SENSOR



SPECIAL REGISTRATION OFFER

SLT-A58

Get free

Screen Protector Sheet Worth Rs. 490/-

For more information, visit: www.sony.co.in/registration



α58

Full HD 1080

upto 8FPS

- New 20.1-megapixel* Exmor™ APS HD CMOS sensor
- New high-resolution, high-contrast OLED Tru-Finder™
- New Lock-on AF
- New Auto Object Framing
- 15-point AF system with 3 cross sensors
- Quick AF Full HD Movie
- ISO 100-16000 sensitivity

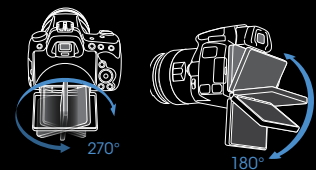
SLT-A58 MRP Rs.32,990/- with SAL1855 lens

* Effective pixels (approx.)
 ** NTSC (PAL)
 *** Among interchangeable-lens cameras with an APS-C sensor as of August 2011.
 ^ In Tele-zoom Continuous Advance Priority AE mode

α57

Full HD 1080

upto 12FPS



APS-C SENSOR

- 16.1 Megapixel* Exmor APS HD CMOS Sensor
- Upto 12 FPS Still Image Capability
- 1080p Full HD Movie Rec. with Auto Focus
- 15-point AF system with 3 Cross Sensors
- ISO 100-16000 sensitivity
- 3.0(7.6cm) 270° Tilttable LCD Monitor
- 3D Sweep Panorama

SLT-A57 MRP Rs.45,990/- with SAL1855 lens

SPECIAL REGISTRATION OFFER

SLT-A57

Get free

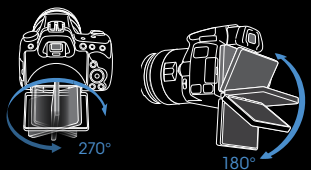
Portrait Lens DT 50mm F1.8 SAM (SAL50F18) Worth Rs. 7,990/-

For more information, visit: www.sony.co.in/registration

α65

Full HD 1080

upto 10FPS



APS-C SENSOR

- Ultra-high resolution: 24.3-megapixel* Exmor™ APS HD CMOS sensor
- Upto 10 fps continuous shooting with Full-time Continuous AF
- AVCHD Ver. 2.0 (Progressive) Full HD Movie at 60p (50p)**
- World's first*** XGA OLED Tru-Finder viewfinder
- 921,600-dot Xtra Fine LCD monitor with variable angle tilt design

SLT-A65 MRP Rs.59,990/- with SAL1855 lens

SPECIAL REGISTRATION OFFER

SLT-A65

Get free

Screen Protector Sheet Worth Rs. 490/-

For more information, visit: www.sony.co.in/registration

FREE HDMI Cable

FREE 4GB Memory Card

FREE Sony Original Carrying Case

ADVANCED QUICK AF LIVE VIEW



With 70-300mm F4.5-5.6 G SSM (SAL70300G) in Tele-zoom Continuous Advance Priority AE mode, (1/800 sec., F5.6), ISO 100, Auto white balance

Quick AF Live View for whichever view you choose

Whether you view and compose via the electronic viewfinder or the LCD monitor, Translucent Mirror Technology means you're seeing the high-resolution image directly from the camera's image sensor, while the image is simultaneously "seen" by the TTL phase-detection AF sensor for Full-time Continuous AF.



100% coverage for perfect framing and composition

100% frame coverage lets you see the entirety of the image you're capturing in the viewfinder and on the LCD. Normally a "premium" feature found only in high-end cameras, full coverage allows more accurate framing, and you won't miss any details at the edges and corners that could affect your composition.



Speed

UPTO 12 FPS HIGH SPEED CONTINOUS SHOOTING

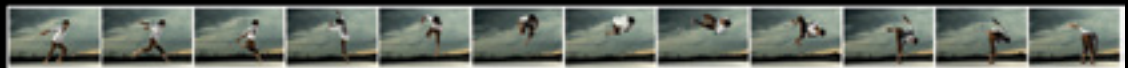
Blazing speed that means you'll never miss the moment

This professional-level continuous shooting speed gives you a decisive advantage when capturing sports action and fleeting facial expressions. Every second, you can capture up to 12* images with clarity and precision. Moreover, you can enjoy the expressive power and flexibility of interchangeable lenses without slowing down performance. As with full-time autofocus, this extra ordinary response is made possible by innovative Sony Translucent Mirror Technology

*Up to 12 FPS in SLT - A77 & SLT - A57, 10 FPS in SLT - A65 & 7 FPS in SLT - A37



Sony DSLT*



Conventional DSLR*



*Comparison made between Sony SLT & other DSLRs in Similar price range.

QUICK AF FOR STILL & MOVIE RECORDING

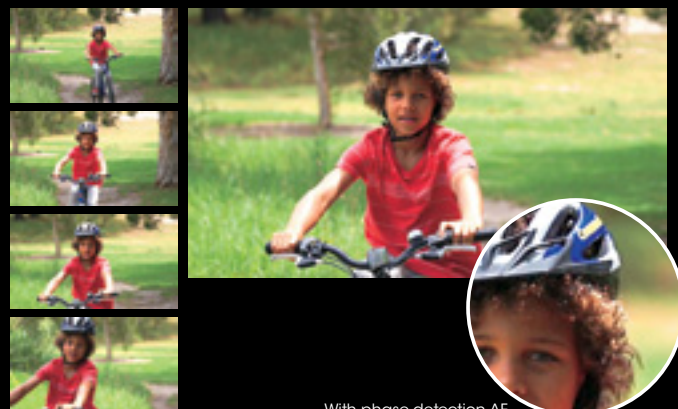


Full-time Continuous AF offers the speed you need for burst shooting and professional-looking movies

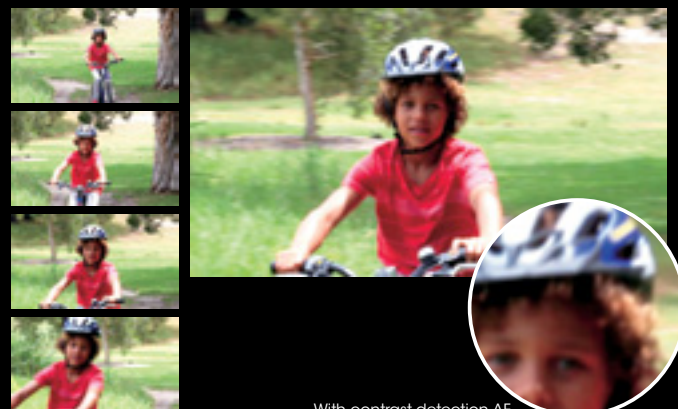
Most interchangeable lens cameras employ standard contrast-detection autofocus when shooting movies and struggle to keep subject in focus, during high speed still shoot. But the Sony SLTs delivers the superior speed and precision of full-time continuous phase-detection

auto-focusing even during high speed still and HD movie shooting — thanks to the breakthrough advantages of Sony Translucent Mirror Technology. This newly enhanced Quick AF Full HD Movie feature combines with high sensitivity and efficient noise reduction to provide

professional results even when focusing on fast-moving subjects indoors. When the AF area is set to Local, you can also switch the focus point from one part of the scene to another while shooting.



With phase-detection AF

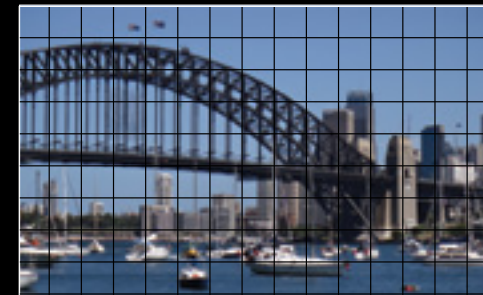


With contrast-detection AF

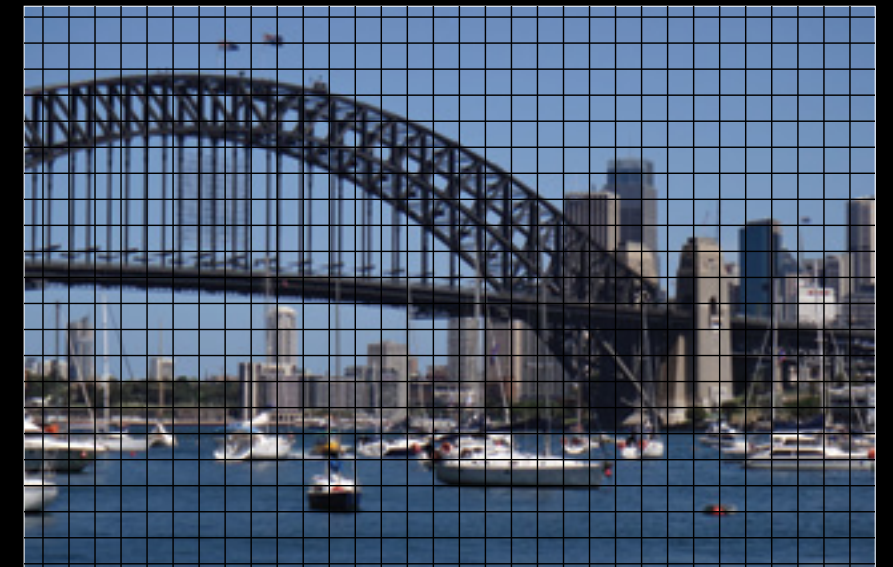
FULL HD 1920X1080 VIDEO RECORDING



Full High Definition gives you enhanced picture quality, which is 4.5 times better than Standard Definition. The difference between High Definition Picture quality and conventional Standard Definition is immediately noticeable. From the smallest smile to the brightest rainbow, you'll definitely appreciate the vibrancy and realism of 1920 x 1080 Full High Definition.



Standard Definition
Less than 1 million pixels



Full High Definition
1920H x 1080V = 2 million pixels

Background defocusing builds cinematic depth

The newly developed Exmor APS HD CMOS sensor used in the SLTs not only has the high sensitivity you need to capture high-quality images in low light, but it is also large enough to create gorgeous background defocusing effects that are beyond the capabilities of conventional camcorders. Judicious use of background defocusing can add a sense of cinematic depth that will infuse your movies with attention-grabbing dramatic appeal.

* When the file format is AVCHD and the size of the file being recorded reaches 2GB, a new file is automatically created and recording continues. With MP4 format, recording will stop when the file size reaches 2 GB.



HDMI Connectivity

Sony SLTs record brilliant High-Definition videos and also have HDMI Connectivity, enabling you to enjoy your videos in brilliant High-Definition clarity on your BRAVIA.

One-touch movie access

A dedicated MOVIE button conveniently located on the top of the body lets you start and stop movie recording with a single touch.



A comprehensive range of lenses for the ideal perspective

The full range of α system A-mount lenses covers a wide range of focal lengths and perspectives that can enhance your movie making: fisheye, super wide-angle, telephoto, macro, zoom, and more. What's more, all of these lenses* benefit from the full-time high-speed, high-precision, TTL phase-detection AF offered by Sony SLTs. You can stretch your cinematic creativity to the limit without running into focusing problems.

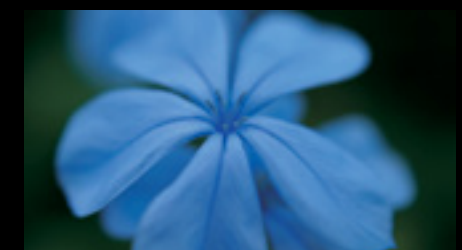
* Except the manual-only SAL135F28

AVCHD and MP4 formats offer broad versatility

The AVCHD format is rapidly becoming the de facto standard for Full HD home movie recording, but the MP4 format makes it easier to post video clips on blogs and video-sharing websites. The Sony SLTs gives you both!

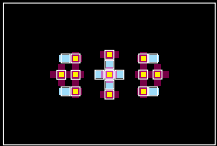


DT 11-18mm F4.5-5.6 (SAL1118)



DT 30mm F2.8 Macro SAM (SAL30M28)

19-POINT AF SYSTEM WITH 11 CROSS SENSORS* FOR PINPOINT FOCUS



■ Cross sensors
■ AF sensors

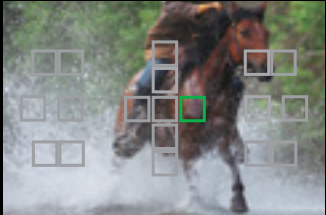
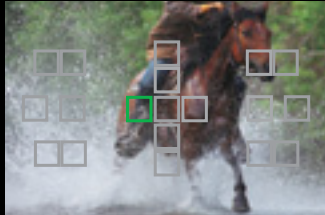
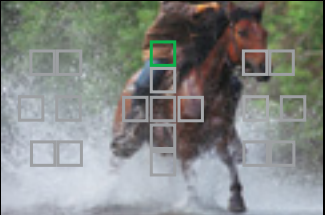
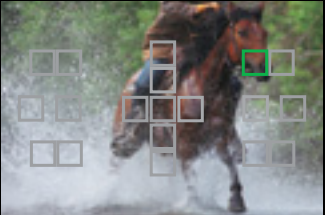


70-400mm F4-5.6 G SSM (SAL70400G), Continuous Advance Priority AE, 1/4000 sec., F5.6, ISO 1250, Auto white balance

The beauty of an SLT is the creave flexibility it gives you. It is unlimited flexibility that Sony SLT provides you in framing your subject in a manner you like. The new phase-detection autofocus system spreads 19 AF sensors over a wide

AF area to increase your framing freedom and keep moving subjects in focus. It includes 11 cross sensors that deliver more accurate and reliable tracking than sensors with only vertical or horizontal detection can achieve. This

new AF system additionally improves autofocus performance in low brightness conditions to ensure precision focusing wherever and whenever you shoot.



* 19 AF Points + 11 Cross Sensors in SLT - A77 & 15 AF Points + 3 Cross Sensors in SLT - A65, SLT - A57 & SLT - A37



BUILT-IN STEADYSHOT™ INSIDE IMAGE STABILIZATION



Built-in SteadyShot™ in Sony SLTs



With image stabilization



Without image stabilization

* Effectiveness of image stabilization varies according to shooting conditions.

Normal DSLRs do not have SteadyShot™ inside, but have it on select lenses that are usually costly. While Sony SLTs have built-in SteadyShot™ Technology inside, which makes it effective enough to enable sharp imaging at shutter speeds approximately 2.5 to 4 steps slower than would otherwise be possible, SteadyShot INSIDE image stabilization increases macro and indoor wide-angle photo opportunities by making it easier to shoot without using a tripod or flash.

Wide range of lenses to choose from without any concern about image stabilization.



FASTER RESPONSE TIME WITH APPROX. 0.05 SEC. MINIMUM RELEASE TIME LAG



With DT 55-200mm F4-5.6 SAM (SAL55200-2), M mode, 1/320 sec., F7.1, ISO 200, Auto white balance

In conventional DSLRs, due to Mirror Flipping & Shutter Release, the lag time is a hindrance. During this 'release time lag' camera does not click images & screen goes black. But in the new SLTs, when photo opportunities arise, accelerated shutter response lets you capture decisive moments with confidence. An innovative electronic front curtain shutter in the image sensor slashes shutter release time lag to a class-leading 0.05 second* (approx.) and produces less shutter noise and vibration than a mechanical front curtain shutter. If desired, a mechanical front curtain shutter can be activated through the MENU.

*Speed may vary depending on shooting conditions and memory card in use.



With DT 16-105mm F3.5-5.6 (SAL16105) in Sweep Panorama Mode

Sweep Panorama captures sweeping vistas in a single motion

There was a time when compositing multiple shots to create panoramic images with eye-catching detail required careful shooting plus time spent at a computer. Now the Sony SLTs Sweep Panorama mode makes it easy to create spectacular panorama photos by simply sweeping the camera

across the scene you want to capture. All necessary post-processing is carried out automatically right in the camera, thanks to the high performance and speed of the Exmor APS HD CMOS sensor and BIONZ image processor.

There's also a 3D Sweep Panorama mode that creates panoramic images with incredible 3D depth. You can view 3D panoramas by connecting the camera to HDMI-compliant 3D TVs.



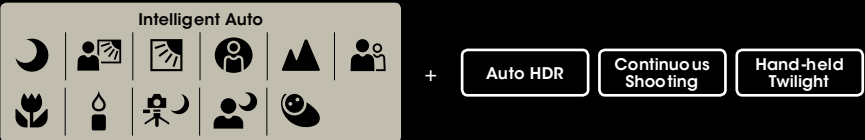
Superior Auto mode



For the ultimate in point-and-shoot convenience, enter the Superior Auto mode. It utilizes advanced detection and analysis to optimize camera parameters for the scene you're shooting. Moreover, it activates advanced functions like Auto HDR and Hand-held Twilight when image quality can be improved. Helpful information is also conveniently displayed on screen.



Auto HDR



Creative Style settings offer extra artistic versatility

Six Creative Style settings for stills and movies provide a range of options for extra artistic flair and expression: Standard, Vivid, Portrait, Landscape, Sunset, and B/W. In addition, contrast & saturation* plus sharpness fine-tuning.

*Not available in B/W mode.



Portrait



Sunset

Other features

FEATURES FOR EXTRA PHOTOGRAPHIC QUALITY AND ENJOYMENT

Multi Frame NR achieves ultra-low-noise imaging

Multi Frame NR realizes extremely low noise by automatically capturing six frames at high speed using the current shutter speed, aperture, and ISO settings, and seamlessly combining them into a single low-noise JPEG image using sophisticated motion-detection and digital compositing technologies. The amount of noise reduction achieved can be as much as two ISO steps. At the highest setting Multi Frame NR uses ISO expansion to achieve class-leading, ultra-high sensitivity that is equivalent to ISO 25600.



Dynamic range approaches human vision with Auto HDR

Auto HDR is another advanced compositing feature that captures far greater shadow and highlight detail than normal exposure. It achieves a dynamic range of 6EV that approaches the extremely wide range of human vision. Auto HDR automatically captures

three frames in rapid succession and combines them into a single image with perfect alignment. The advanced algorithms used to align the exposures are so effective that you can even shoot remarkable HDR images without using a tripod.



Final image with optimum shadow/highlight detail

* Auto HDR available in P/A/S/M modes, and may be automatically activated in AUTO+ mode. Disabled when RAW or RAW+JPEG image file format is selected.

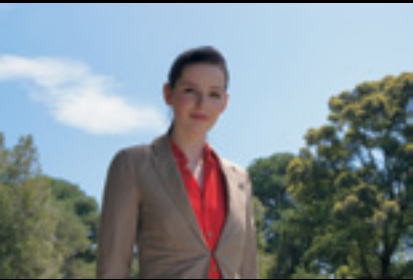
Hand-held Twilight mode enables low-light captures without flash

The Hand-held Twilight mode is a fully automatic Scene Selection mode that works similarly to Multi Frame NR, taking six frames at high speed and precisely combining them into a single image, using Sony digital compositing technology. Low-light blurring and noise are minimized so you can shoot natural-looking images without flash.



D-Range Optimizer brings out high-light and shadow detail in any light

The D-Range Optimizer uses original Sony technology to bring out natural highlight and shadow detail in high contrast lighting conditions. That can be a huge advantage when shooting portraits and active subjects. High-speed BIONZ processing means it can even be used for continuous shooting.



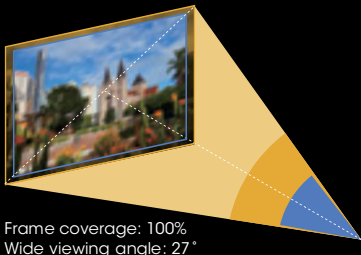
DRO on (Lv.5)



DRO off

THE WORLD'S FIRST* XGA OLED VIEWFINDER# FOR SUPREME COMFORT AND EASE

Translucent
Mirror Technology™



Unrivaled resolution, contrast and response

Camera technology takes a major leap forward with the introduction of the world's first* OLED viewfinder. This extraordinary new XGA OLED Tru-Finder displays your scene with incredible contrast, clarity and color accuracy. Since Translucent Mirror Technology transmits the same image to the viewfinder and image sensor, you can view exactly what will appear in your photo, including defocusing effects that faithfully reflect your aperture settings. You can therefore perfect the background as well as your main subject when composing photos. Moreover, viewing is supremely easy in any type of lighting — a distinct advantage over optical viewfinders that are hard to view in the dark and LCD monitors that are difficult to view in bright sunlight. This viewing ease makes it much easier to concentrate on the scene.

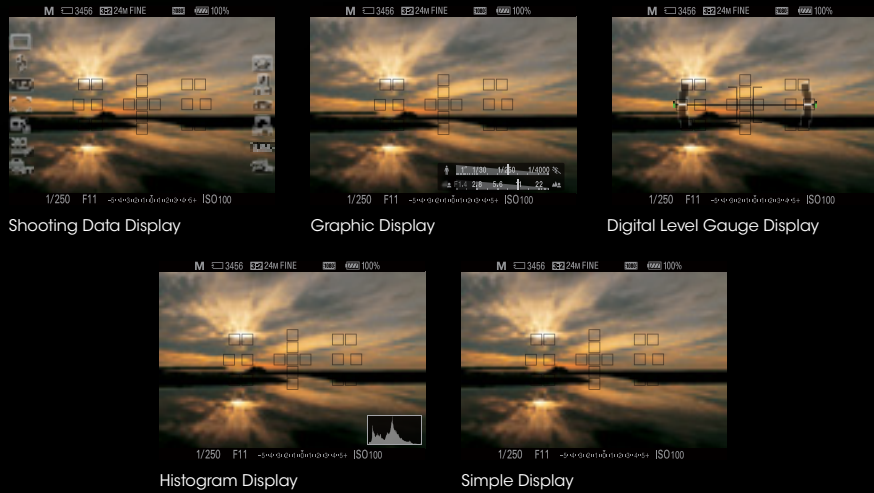
The backlight-free design of OLED technology delivers incredible contrast — 10 times higher than conventional electronic viewfinders — that broadens the dynamic range. Accelerated OLED response also virtually eliminates both motion blur and residual images when tracking moving objects or displaying recorded movies. Slim unit dimensions gave Sony extra freedom to achieve advances like a wide 33.3° viewing angle, high 27 mm eye-point and 100% frame coverage. A high-precision 2,369k (approx.) dot resolution allows fine-adjustment of focus via Focus Magnifier, which enlarges part of the image so you can fine-tune the focus and then zoom out to capture the shot.

*Among interchangeable-lens cameras with an APS-C sensor as of August 2011.
#Available with SLT - A77, SLT - A65 & SLT - A58



Variable information display

The OLED viewfinder clearly displays detailed shooting information at high XGA resolution for quick and easy reading. You can display the data in your choice of five display modes (Shooting Data, Graphic, Digital Level Gauge, Histogram or Simple Display) by pressing the DISP button. The Digital Level Gauge indicates whether the camera is level in the horizontal and front-back directions. The Histogram displays the luminance distribution of pixels in the image, which can be adjusted through exposure compensation. And the Graphic Display shows the shutter speed and aperture value as graphs, while also clearly illustrating the exposure.



Do it all from the viewfinder

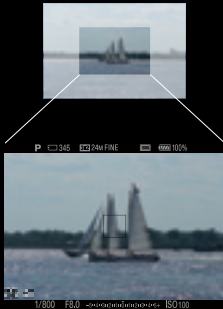
The viewfinder is so informative and easy to view that every step in the photographic process — including setting up shooting parameters and previewing their effects in real-time, framing your subject and fine-tuning the focus with the Enlargement feature, shooting photos and movies, and checking final results — can easily be handled from start to finish without removing your eye from the viewfinder. This is true even in bright outdoor lighting and during sports, portrait and macro photography. So you can fully concentrate on capturing spectacular images.

High visibility in bright and dark scenes

Since the viewfinder image is just as dim or bright as the actual scene, viewing is remarkably easy in any type of lighting — a genuine advantage over optical viewfinders that are difficult to view in dark settings and rear LCD monitors that are hard to view in bright settings.

Smart Teleconverter provides a clear and precise enlarged image

This convenient alternative to zooming makes it easy to capture distant subjects while viewing the finder. Press the Smart Teleconverter button on the back of the camera once to enjoy the equivalent of 1.4x magnification or twice for 2x magnification. When you're pleased with the composition clearly displayed on the high-resolution XGA OLED, press the shutter button to record the image at a minimum 12-megapixel resolution.



Three grid displays

Whenever you desire assistance aligning the horizon or achieving a balanced composition, you can overlay one of three types of grids in the viewfinder. These include a 3x3 grid that follows the rule of thirds, a 4x4 grid that includes two 45-degree lines passing through the center, and a 6x4 grid that simplifies the alignment of multiple visual elements.



THE ENTIRE α A-MOUNT LENS LINEUP

Zoom lenses

Light, compact zoom lenses ranging from super wide-angle to telephoto give you outstanding flexibility for framing and composition and enable fast response by minimizing the need for lens changes.



DT 11-18mm
F4.5-5.6
(SAL1118)
MRP Rs. 44,990/-



DT 16-50mm
F2.8 SSM
(SAL1650)
MRP Rs. 44,990/-



DT 16-105mm
F3.5-5.6
(SAL16105)
MRP Rs. 32,990/-



DT 18-55mm
F3.5-5.6 SAM
(SAL1855)
MRP Rs. 12,990/-



DT 18-250mm
F3.5-6.3
(SAL18250)
MRP Rs. 34,990/-



28-75mm
F2.8 SAM
(SAL2875)
MRP Rs. 49,990/-



DT 55-200mm
F4-5.6 SAM
(SAL55200-2)
MRP Rs. 12,990/-



75-300mm
F4.5-5.6
(SAL75300)
MRP Rs. 13,990/-



DT 55-300mm
F4.5-5.6
(SAL55300)
MRP Rs. 19,990/-



DT 18-135mm
F3.5-5.6
(SAL18135)
MRP Rs. 39,990/-



Fixed focal length lenses

Precision fixed focal length lenses covering every focal length from fisheye to portrait, macro, and telephoto. Fixed focal length lenses offer a consistent, intuitive shooting experience with optimized performance that is often a cut above zoom lenses.



16mm F2.8
Fisheye
(SAL16F28)
MRP Rs. 54,990/-



20mm
F2.8
(SAL20F28)
MRP Rs. 37,990/-



DT 35mm
F1.8 SAM
(SAL35F18)
MRP Rs. 15,490/-



50mm
F1.4
(SAL50F14)
MRP Rs. 24,990/-



DT 50mm
F1.8 SAM
(SAL50F18)
MRP Rs. 7,990/-



DT 30mm
F2.8 Macro SAM
(SAL30M28)
MRP Rs. 12,990/-



50mm
F2.8 Macro
(SAL50M28)
MRP Rs. 29,990/-



100mm
F2.8 Macro
(SAL100M28)
MRP Rs. 49,990/-



85mm F2.8
SAM
(SAL85F28)
MRP Rs. 15,490/-



135mm
F2.8 [T4.5] STF
(SAL135F28)
MRP Rs. 84,990/-



G Lenses™

G Lenses represent the most elevated standards of optical excellence, making liberal use of top-quality aspherical and ED glass elements.





35mm
F1.4 G
(SAL35F14G)
MRP Rs. 99,990/-



300mm
F2.8 G
(SAL300F28G)
MRP Rs. 4,99,900/-



70-200mm
F2.8 G
(SAL70200G)
MRP Rs. 1,29,900/-



70-300mm
F4.5-5.6 G SSM
(SAL70300G)
MRP Rs. 54,990/-



70-400mm
F4-5.6 G SSM
(SAL70400G2)
MRP Rs. 1,09,990/-



500mm
F4 G SSM
(SAL500F4G)
MRP Rs. 7,99,990/-



Carl Zeiss® lenses

Developed jointly by Sony and renowned optical manufacturer Carl Zeiss, Inc., these lenses prove their thoroughbred pedigree in every image.





Distagon T*
24mm F2 ZA SSM
(SAL24F20Z)
MRP Rs. 79,990/-



Planar T*
85mm F1.4 ZA
(SAL85F14Z)
MRP Rs. 109,900/-



Sonnar T*
135mm F1.8 ZA
(SAL135F18Z)
MRP Rs. 99,990/-



Vario-Sonnar T*
16-35mm F2.8 ZA SSM
(SAL1635Z)
MRP Rs. 1,09,900/-



Vario-Sonnar T*
24-70mm F2.8 ZA SSM
(SAL2470Z)
MRP Rs. 1,19,900/-



Vario-Sonnar T*
DT 16-80mm F3.5-4.5 ZA
(SAL1680Z)
MRP Rs. 49,990/-

APS-C

Designed specifically for use with cameras that have an APS-C type image sensor



Teleconverters

1.4x and 2x teleconverters let you take extra telephoto power into the field without adding much weight or bulk to your kit.



1.4x Teleconverter
(SAL14TC)
MRP Rs. 29,990/-



2x Teleconverter
(SAL20TC)
MRP Rs. 29,990/-



MORE WAYS TO EXPAND AND IMPROVE YOUR PHOTOGRAPHY

α58 α65
α57 α77

Auto-lock
Accessory Shoe

Flash

HVL-F58AM

MRP Rs. 27,990/-

GN58 power (105mm ISO100·m) with a new concept quick shift bounce system, wireless ratio control incorporated, wide panel & bounce sheet built-in variable-angle head, auto zoom, wireless support, fast recharge, auto white balance, ADI metering, high-speed sync, a wide diffusion panel, and a Mini Stand for off-camera use.

Multi
Interface Shoe
Auto-lock
Accessory Shoe

Flash

HVL-F60M

Our powerful flagship flash unit (GN 60) features an LED light and delivers creative lighting for both still image and movie shooting. It also offers a flexible rotation mechanism for Quick Shift Bounce.

α58 α65
α57 α77

Auto-lock
Accessory Shoe

Flash

HVL-F20AM

MRP Rs. 6,990/-

GN20 Power (50mm, ISO100·m) with auto white balance, ADI metering, and a bounce switch that lets you bounce light off the ceiling to assure more even illumination when shooting indoors.

α57
α58
α65
α77

Rechargeable Battery Pack

NP-FM500H

MRP Rs. 3,990/-

α57
α58
α65
α77

Battery Charger

BC-VM10

MRP Rs. 3,290/-

■ Charges M-series batteries.
■ Compact battery-insertion design is convenient when travelling.

α58 α65
α57 α77

HDMI Cable

DLC-HEM15

MRP Rs. 1,990/-

Cables for high-speed transfer of uncompressed, high-definition digital video and uncompressed multi-channel digital audio.

α58 α65
α57 α77

Remote Commander

RM-L1AM

MRP Rs. 2,790/-

Wired remote commander.
Cable length 5 meter.

α58 α65
α57 α77

Remote Commander

RMT-DSLR2

MRP Rs. 2,490/-

Wireless remote commander.

α77

Vertical Grip

VG-C77AM

MRP Rs. 17,490/-



Soft Carrying Case

LCS-SC8

MRP Rs. 2,490/-



Soft Carrying Case

LCS-SC21

MRP Rs. 4,490/-



Back Pack

LCS-BP2

MRP Rs. 5,490/-

α57 α65
α77

Hot Shoe Adapter

FA-HS1AM

MRP Rs. 1,990/-

Shoulder Strap

STP-XS3

MRP Rs. 1,990/-



Black (BI)

Brown (TI)

Carl Zeiss Filters

MC Protector

VF-55MPAM

MRP Rs. 3,250/-

ZEISS

T*

PL FILTER

VF-55CPAM

MRP Rs. 5,500/-

ND Filter

VF-55NDAM

MRP Rs. 4,900/-



α77 recordable frames & movies



Number of recordable frames for single media

(Memory Stick PRO Duo, Image size L 24M, aspect ratio 3:2)

	2GB	4GB	8GB	16GB	32GB
Standard	335	680	1350	2750	5500
Fine	205	410	830	1650	3300
Extra Fine	100	200	405	820	1600
RAW & JPEG	54	105	220	440	880
RAW	74	145	300	600	1200

Movie recording time for single media

(Memory Stick PRO Duo, in hours and minutes, approx.)

		2GB	4GB	8GB	16GB	32GB
AVCHD	60i 24M (FX) (NTSC) 50i 24M (FX) (PAL)	0:10	0:20	0:40	1:30	3:00
AVCHD	60p 28M (PS) (NTSC) 50p 28M (PS) (PAL)	0:09	0:15	0:35	1:15	2:30
AVCHD	24p 24M (FX) (NTSC) 25p 24M (FX) (PAL)	0:10	0:20	0:40	1:30	3:00
MP4	1440x1080 12M	0:20	0:40	1:20	2:45	5:30

• Recommended memory card for movie recording: Memory Stick PRO Duo (Mark2), Memory Stick PRO-HG Duo, SD memorycard/SDHC memory card/SDXC memory card (Class 4 or more)
• The numbers in the table above show the approximate maximum recordable time obtained by totaling all movie files.
• The size of a movie file is limited to approx. 2GB.

α65 recordable frames & movies



Number of recordable frames for single media

(Memory Stick PRO Duo, Image size L 24M, aspect ratio 3:2)

	2GB	4GB	8GB	16GB	32GB
Standard	335	680	1350	2750	5500
Fine	205	410	830	1650	3300
RAW & JPEG	54	105	220	440	880
RAW	74	145	300	600	1200

Movie recording time for single media

(Memory Stick PRO Duo, in hours and minutes, approx.)

		2GB	4GB	8GB	16GB	32GB
AVCHD	60i 24M (FX) (NTSC) 50i 24M (FX) (PAL)	0:10	0:20	0:40	1:30	3:00
AVCHD	60p 28M (PS) (NTSC) 50p 28M (PS) (PAL)	0:09	0:15	0:35	1:15	2:30
AVCHD	24p 24M (FX) (NTSC) 25p 24M (FX) (PAL)	0:10	0:20	0:40	1:30	3:00
MP4	1440x1080 12M	0:20	0:40	1:20	2:45	5:30

• Recommended memory card for movie recording: Memory Stick PRO Duo (Mark2), Memory Stick PRO-HG Duo, SD memorycard/SDHC memory card/SDXC memory card (Class 4 or more)
• The numbers in the table above show the approximate maximum recordable time obtained by totaling all movie files.
• The size of a movie file is limited to approx. 2GB.

α57 recordable frames & movies



Number of recordable frames for single media

(Memory Stick PRO Duo, Image size L 16M, aspect ratio 3:2)

	2GB	4GB	8GB	16GB	32GB
Standard	410	820	1650	3350	6700
Fine	295	590	1150	2400	4800
RAW & JPEG	80	160	325	650	1300
RAW	110	220	445	890	1750

Movie recording time for single media

(Memory Stick PRO Duo, in hours and minutes, approx.)

		2GB	4GB	8GB	16GB	32GB
AVCHD	60i 24M (FX) (NTSC) 50i 24M (FX) (PAL)	0:10	0:22	0:40	1:30	3:00
AVCHD	60p 28M (PS) (NTSC) 50p 28M (PS) (PAL)	0:09	0:15	0:35	1:15	2:30
AVCHD	24p 24M (FX) (NTSC) 25p 24M (FX) (PAL)	0:10	0:20	0:40	1:30	3:00
MP4	1440x1080 12M	0:20	0:40	1:20	2:45	5:30

• Recommended memory card for movie recording: Memory Stick PRO Duo (Mark2), Memory Stick PRO-HG Duo, SD memorycard/SDHC memory card/SDXC memory card (Class 4 or more)
• The numbers in the table above show the approximate maximum recordable time obtained by totaling all movie files.
• The size of a movie file is limited to approx. 2GB.

α58 recordable frames & movies



Number of recordable frames for single media

(Memory Stick PRO Duo, Image size L 20M, aspect ratio 3:2)

	2GB	4GB	8GB	16GB	32GB	64GB
Standard	385	780	1550	3150	6300	12500
Fine	240	485	980	1950	3900	7800
RAW & JPEG	65	125	260	520	1050	2100
RAW	89	175	355	720	1400	2850

Movie recording time for single media

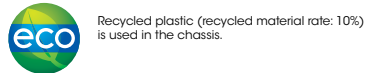
(Memory Stick PRO Duo, in hours and minutes, approx.)

		2GB	4GB	8GB	16GB	32GB	64GB
AVCHD	60i 24M (FX) / 50i 24M (FX)	0:10	0:20	0:45	1:30	3:00	6:00
AVCHD	60i 17M (FH) / 50i 17M (FH)	0:15	0:30	1:00	2:00	4:05	8:15
AVCHD	24p 24M (FX) / 25p 24M (FX)	0:10	0:20	0:45	1:30	3:00	6:00
AVCHD	24p 17M (FH) / 25p 17M (FH)	0:15	0:30	1:00	2:00	4:05	8:15
MP4	1440 x 1080 12M	0:20	0:40	1:20	2:45	5:30	11:05

• Recommended memory card for movie recording: Memory Stick PRO Duo (Mark2), Memory Stick PRO-HG Duo, SD memorycard/SDHC memory card/SDXC memory card (Class 4 or more)
• The numbers in the table above show the approximate maximum recordable time obtained by totaling all movie files.
• The size of a movie file is limited to approx. 2GB.

Main specifications of α77

Type		
Camera type	Interchangeable-lens digital camera with built-in flash	
Lens compatibility		
Lens compatibility	Sony A-mount lenses, operation with /Konica Minolta lenses confirmed	
Image sensor		
Type	APS-C size (23.5 x 15.6 mm), Exmor APS HD CMOS sensor with primary color filters	
Number of pixels (effective)	Approx. 24.3 megapixels	
Number of pixels (total)	Approx. 24.7 megapixels	
Image sensor aspect ratio	3:2	
Anti-dust system	Charge protection coating on low-pass filter and Image Sensor-Shift mechanism	
Recording system (still image)		
Recording format	JPEG (DCF Ver. 2.0, Exif Ver. 2.3, MPF baseline compliant), RAW (Sony ARW 2.3 format), 3D MPO (MPF Extended compliant)	
Image size (pixels)	3:2 aspect ratio	L: 6000 x 4000 (24M), M: 4240 x 2832 (12M), S: 3008 x 2000 (6M)
	16:9 aspect ratio	L: 6000 x 3376 (20M), M: 4240 x 2400 (10M), S: 3008 x 1688 (5.1M)
	Sweep Panorama	Wide: horizontal 12,416 x 1,856 (23M), vertical 5,536 x 2,160 (12M), Standard: horizontal 8,192 x 1,856 (15M), vertical 3,872 x 2,160 (8.4M)
	3D Sweep Panorama	Wide: 7152 x 1080 (7.7M), Standard: 4912 x 1080 (5.3M), 16:9: 1920 x 1080 (2.1M)
Image quality modes	RAW, RAW & JPEG, JPEG Extra fine, JPEG Fine, JPEG Standard	
Picture Effect	11 modes (15 effects): Posterization (Color, B/W), Pop Color, Retro Photo, Partial Color (R,G,B,Y), High Contrast Monochrome, Toy Camera, Soft High-key, Soft Focus, HDR Painting, Rich-tone Monochrome, Miniature	
Creative Style	Standard, Vivid, Neutral, Clear, Deep, Light, Portrait, Landscape, Sunset, Night Scene, Autumn leaves, Black & White, Sepia (Contrast (-3 to +3 steps), Saturation (-3 to +3 steps), Sharpness (-3 to +3 steps))	
Dynamic range functions	Off, Dynamic Range Optimizer: Auto/Level, Auto High Dynamic Range: Off, Auto Exposure Difference, Exposure Difference Level (1-6 EV, 1.0 EV step)	
Color space	sRGB, Adobe RGB	
Recording system (movie)		
Recording format	AVCHD 2.0 (Progressive) / MP4	
Video compression	MPEG-4 AVC (H.264)	
Audio recording format	Dolby Digital (AC-3) / MPEG-4 AAC-LC	
Image size (pixels)	NTSC	AVCHD: 1920 x 1080 (60p/28Mbps/PS, 60i/24Mbps/FX, 60i/17Mbps/FH, 24p/24Mbps/FX, 24p/17Mbps/FH)
		MP4: 1440 x 1080 (30fps/12Mbps), VGA: 640 x 480 (30fps/3Mbps)
*NTSC/PAL compatibility depends on region.	PAL	AVCHD: 1920 x 1080 (50p/28Mbps/PS, 50i/24Mbps/FX, 50i/17Mbps/FH, 25p/24Mbps/FX, 25p/17Mbps/FH)
		MP4: 1440 x 1080 (25fps/12M), VGA: 640 x 480 (25fps/3M)
Media		
Media	Memory Stick PRO Duo™, Memory Stick PRO-HG Duo™, SD memory card, SDHC memory card (UHS-I compliant), SDXC memory card (UHS-I compliant)	
Slot	Memory Stick Duo / SD memory card	
Noise reduction		
Noise reduction	Long exposure NR: On/Off, available at shutter speeds longer than 1 sec. High ISO NR: High/Normal/Low	
Multi frame noise reduction	Auto/ISO100 to 25600	
White balance		
Modes	Auto WB, Daylight, Shade, Cloudy, Incandescent, Fluorescent (Warm white/Cool white/Day white/Daylight), Flash, C. Temp 2500 to 9900K, C Filter G7 to M7, 15-step, Custom, AWB micro adjustment	
Two-axis fine adjustment	Available in all modes <G7 to M7 (15 steps), A7 to B7 (15 steps)>	
Bracketing	3 frames, H/L selectable	
Focus system		
Type	TTL Phase-detection AF	
Focus sensor	CCD line sensors	
Focus point	19 points (11 points cross type)	
Sensitivity range	EV -1 to 18 (at ISO100 equivalent, with F2.8 lens attached)	
Focus mode	Autofocus, Direct Manual Focus, Manual focus	
AF mode	Single-shot AF (AF-S), Continuous AF (AF-C), Automatic AF (AF-A) selectable	
Focus area	Wide (auto, 19 points) / Zone / Spot / Local	
Other features	Tracking Focus, Predictive control (AF-A,AF-C), Focus lock, Eye-start AF, AF illuminator (built-in LED type)	
Exposure control		
Metering type	1200-zone evaluative metering	
Metering sensor	Exmor APS HD CMOS sensor	
Metering sensitivity	EV-2 to EV17 (at ISO100 equivalent with F1.4 lens attached)	
Modes	Multi segment, Spot, Center weighted	
Exposure modes	AUTO, AUTO Advanced (AUTO+), Scene Selection, Sweep Panorama, 3D Sweep Panorama, Continuous Advance Priority AE, Movie, Programmed AE (P), Aperture priority (A), Shutter-speed priority (S), Manual (M)	
Scene Selection	Portrait, Landscape, Macro, Sports Action, Sunset, Night Portrait, Night View, Hand-held Twilight	
Exposure compensation	±5.0 EV (1/3 EV, 1/2 EV steps selectable)	
AE bracketing	Bracket: Cont., Bracket: Single, with 1/3 EV, 1/2 EV, 2/3 EV, 2.0 EV, 3.0 EV increments, 3 or 5 frames (2.0 EV, 3.0 EV: only 3 frames)	
AE lock	Available with AE lock button. AE is also locked when focus is locked in multi-segment metering mode.	
ISO sensitivity (Recommended Exposure Index)	ISO 100-16000 equivalent (expandable to ISO 50), AUTO (ISO 100-12800 selectable with upper or lower limit)	
Viewfinder		
Type	XGA OLED, 1.3 cm (0.5 type) electronic viewfinder	
Total number of dots	2,359,296 dots	
Brightness control	Auto / Manual (3 steps between -1 and +1)	
Field coverage	100%	
Magnification	Approx. 1.09x (with 50 mm lens at infinity, -1 m ⁻¹)	
Dioptr adjustment	-4.0 ~ +3.0 m ⁻¹	
Eye point	Approx. 27 mm from the eyepiece lens, 22 mm from the eyepiece frame at -1 diopter (CIPA standard)	
Display	Histogram Display, Graphic Display, Digital Level Gauge, Shooting Data Display, SimpleDisplay, Grid Line.	
Real-time image adjustment display	Exposure Comp, White Balance, Creative Style	



System requirements of bundled software

	Image Data Converter Ver. 4		PMB
OS*	Microsoft Windows ® Windows® XP** SP3, Windows Vista® SP2, Windows 7 SP1	Macintosh Mac OS X (10.5, 10.6 Snow Leopard)	Microsoft Windows ® Windows® XP** SP3, Windows Vista® SP2, Windows 7 SP1
CPU	Pentium 4 or faster	Intel Core Solo, Core Duo, Core 2 Duo or faster	Pentium III 800 MHz or faster (for playing/editing HD movies: Intel Core Duo 1.66 GHz or faster, Intel Core 2 Duo 1.66 GHz or faster, Intel Core 2 Duo 2.26 GHz or faster (HD FX/HD FH), Intel Core 2 Duo 2.40 GHz or faster (HD PS))
Memory	1 GB or more is recommended	1 GB or more is recommended	512 MB or more (for playing/editing HD movies: 1 GB or more)

Trademarks & Remarks

* α is a trademark of Sony Corporation.

- Exmor ^{Exmor}*Exmor*, BIONZ ^{BIONZ}*BIONZ*, BRAVIA BRAVIA, SteadyShot, VAIO ^{VAIO}*VAIO*, InfoLithium ^{InfoLithium}*InfoLithium*, ^{Tru-Finder}*Tru-Finder*, Translucent Mirror Technology ^{Translucent Mirror Technology}*Tru-Finder*, ^{Tru-Finder}*Tru-Finder*, Memory Stick PRO Duo **MEMORY STICK PRO Duo**, and Memory Stick PRO-HG Duo **MEMORY STICK PRO-HG Duo** are trademarks or registered trademarks of Sony Corporation.
- PLAYSTATION is a registered trademark of Sony Computer Entertainment Inc.
- Blu-ray Disc and ^{Blu-ray Disc}*Blu-ray Disc* are trademarks.
- AVCHD ^{AVCHD}*AVCHD* and AVCHD Progressive ^{AVCHD Progressive}*AVCHD* and their respective logos are trademarks of Panasonic Corporation and Sony Corporation.
- SD Logo, SDHC Logo and SDXC Logo are trademarks of SD-3C, LLC.
- HDMI, HDMI Logo, and High-Definition Multimedia Interface are trademarks or registered trademarks of HDMI Licensing LLC in the United States and other countries.
- All other company and product names mentioned herein are used for identification purposes only and may be the trademarks or registered trademarks of their respective owners.
- InfoLithium ^{InfoLithium}*InfoLithium* is a lithium battery pack which can exchange data with compatible electronic equipment about its energy consumption.

Sony recommends that you use the battery pack with electronic equipment bearing the ^{InfoLithium}*InfoLithium* mark.

- Screen displays are simulated.
- Simulated effects are used to illustrate some functions.

LCD monitor	
Type	Xtra Fine, 7.5 cm (3.0 type) TFT drive with TruBlack technology
Total number of dots	921,600 dots
Brightness control	Auto/Manual (5 steps between -2 and +2)
Field coverage	100%
Adjustable angle	Tilt angle: 150 degrees upward and 180 degrees downward. Rotation angle: 180 degrees clockwise and 90 degrees counterclockwise.
Display Selector (finder/LCD)	Auto/Manual
Display	Histogram Display, Graphic Display, Digital Level Gauge, Shooting Data Display, Simple Display, Shooting Information For Viewfinder, Grid Line.
Real-time image adjustment display	Exposure Comp., White Balance, Creative Style
Focus Magnifier	5.9x, 11.7x
Peaking MF	Yes (Level: High/Mid/Low/Off, Color: White/Red/Yellow)
Display panel	
	Setting mode indicator LCD

Smart Teleconverter (digital zoom without image deterioration)
Approx. 1.4 x / 2x

Shutter	
Type	Electronically controlled, vertical-traverse, focal-plane type
Shutter speed	1/8000 to 30 sec., Bulb
Flash sync. speed	1/250 sec.
Electronic front curtain shutter	Yes, On/Off
SteadyShot ™ (image stabilization)	
System	For still images: Image Sensor-Shift mechanism. For movies: Electronic
SteadyShot capability	For still images: Approx. 2.5-4.5 EV decrease in shutter speed (varies according to shooting conditions and lens used)
Flash	
Type	Auto popup, built-in
Guide No.	12 (in meters at ISO 100)
Coverage	FOV coverage up to 16 mm (in the focal length)
Control	ADI flash / Pre-flash TTL / Manual flash
Compensation	±3.0 EV (switchable between 1/3 and 1/2 EV steps)
Bracketing	0.3/0.5/0.7/2.0/3.0 EV steps, 3 or 5 frames (2.0/3.0 EV: only 3 frames) selectable
Modes	Flash off, Autoflash, Fill-flash, Rear sync., Slow Sync., Red-eye reduction (On/Off)
Recycling time	Approx. 3 sec.
External flash	Sony α System Flash compatible with auto-lock accessory shoe
Wireless control	Yes (wireless flash with lighting ratio control)

Drive	
Drive modes	Single Shot, Continuous (Hi/Lo) Self-timer (10/2 sec. delay selectable), Bracket Cont., Bracket Single, White Balance bracket, DR0 bracket, Remote Control (with optional RM-DSLR1)
	Hi: Maximum 8 frames per second / Lo: Maximum 3 frames per second
Continuous shooting speed ¹	Continuous Advance Priority AE: Maximum 12 images per second
	Continuous Advance Priority AE mode: Extra fine: 13 images, Fine: 17 images, Standard: 17 images, RAW & JPEG: 11 images, RAW: 13 images
Max. continuous shots	Continuous shooting ² : Extra fine: 13 images, Fine: 18 images, Standard: 18 images, RAW & JPEG: 11 images, RAW: 13 images

Playback	
Modes	Single (with or without shooting information), RGB histogram and highlight/shadow warning, 4/9-frame index view, Enlarged display mode (L: 13.6x, M: 9.9x, S: 6.8x), Auto Review (10/5/2 sec. Off), Image orientation (On/Off) Slideshow, Panorama scrolling, Folder selection (Still), Forward/Rewind (movie), Delete, Protect

Other features	
	Face detection (up to 8 faces detectable automatically), Face registration, Face selection, Smile shutter (selectable from 3 steps), In-Camera Guide, Custom Function, GPS
Interface	
PC interface	Hi-speed USB (USB 2.0): Mass-storage, MTP
HD output	HDMI mini connector (Type-C), BRAVIA Sync (link menu), PhotoTV HD
Others	Sync. Terminal, Auto-lock accessory shoe, Microphone jack, DC IN terminal, Remote terminal

Compatible OS (USB connection)	
	Windows XP ³ SP3, Windows Vista ⁴ SP2, Windows 7 SP1, Mac OS X (10.3-10.6)

Audio	
Microphone	Built-in stereo microphone or ECM-ALST1 / ECM-CG50 (sold separately)
Speaker	Built-in, monoaural, volume settings in 8 steps
Print	
Compatible standards	Exif Print, Print Image Matching III, DPOF setting
Custom function	
Type	Custom key settings
Memory Function	Yes (3 sets)
Power	
Battery	Rechargeable battery pack NP-FM500H
Still images	Approx. 470 shots with viewfinder and 530 shots with LCD monitor (CIPA standard)
Movies	Approx. 185 min. with viewfinder and 185 min. with LCD monitor
External power	AC Adaptor AC-PWT0AM (optional)
Weight	
With battery and Memory Stick PRO Duo	Approx. 732 g (1 lb 9.8 oz)
Body only	Approx. 653 g (1 lb 7.0 oz)
Dimensions	
W x H x D (excluding protrusions)	Approx. 142.6 x 104.0 x 80.9 mm (5 3/4 x 4 1/8 x 3 1/4 in.)
Body material	
Body material	Magnesium alloy and high-grade plastic exterior
Operating temperature	
Range	0°C to 40°C (32°F to 104°F)

Specifications and features are based on information available at the time of printing and are subject to change without notice.

*1 Speed may vary depending on shooting conditions and memory card in use.
*2 When drive mode is set to continuous shooting "Hi" mode.
*3 64-bit and Starter Editions are not supported.
*4 Starter Edition is not supported.

Main specifications of α65

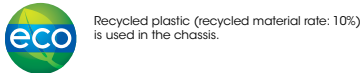
Type			
Camera type	Interchangeable-lens digital camera with built-in flash		
Lens Compatibility			
Lens compatibility	Sony A-mount lenses, operation with Minolta/Konica Minolta lenses confirmed		
Image sensor			
Type	APS-C size (23.5 x 15.6 mm), <i>Exmor</i> APS HD CMOS sensor with primary color filters		
Number of pixels (effective)	Approx. 24.3 megapixels		
Number of pixels (total)	Approx. 24.7 megapixels		
Image sensor aspect ratio	3:2		
Anti-dust system	Charge protection coating on Low-Pass Filter and Image Sensor-Shift mechanism		
Recording system (still image)			
Recording format	JPEG (DCF Ver. 2.0, Exif Ver. 2.3, MPF Baseline compliant), RAW (Sony ARW 2.3 format), 3D MPO (MPF Extended compliant)		
Image size (pixels)	3:2 aspect ratio	L:6000 x 4000 (24M), M: 4240 x 2832 (12M), S: 3008 x 2000 (6M)	
	16:9 aspect ratio	L:6000 x 3376 (20M), M: 4240 x 2400 (10M), S: 3008 x 1688 (5.1M)	
	Sweep Panorama	Wide: horizontal 12,416 x 1,856 (23M), vertical 5,536 x 2,160 (12M), Standard: horizontal 8,192 x 1,856 (15M), vertical 3,872 x 2,160 (8.4M)	
	3D Sweep Panorama	Wide: 7152 x 1080 (7.7M), Standard: 4912 x 1080 (5.3M), 16:9: 1920 x 1080 (2.1M)	
Image quality modes	RAW, RAW & JPEG, JPEG Fine, JPEG Standard		
Picture Effect	11 modes (15 effects): Posterization (Color, B/W), Pop Color, Retro Photo, Partial Color (R,G,B,Y), High Contrast Monochrome, Toy Camera, Soft High-key, Soft Focus, HDR Painting, Rich-tone Monochrome, Miniature		
Creative Style	Standard, Vivid, Portrait, Landscape, Sunset, B/W (Contrast: -3 to +3 steps, Saturation: -3 to +3 steps, Sharpness: -3 to +3 steps)		
Dynamic range functions	Off, Dynamic Range Optimizer (Auto/Level), Auto High Dynamic Range: Off, Auto Exposure Difference, Exposure Difference Level (1-6 EV, 1.0 EV step)		
Color space	sRGB, Adobe RGB		
Recording system (movie)			
Recording format	AVCHD 2.0 (Progressive) / MP4		
Video compression	MPEG-4 AVC (H.264)		
Audio recording format	Dolby Digital (AC-3) / MPEG-4 AAC-LC		
Image size (pixels)	NTSC	AVCHD: 1920 x 1080 (60p/28Mbps/PS, 60i/24Mbps/FX, 60i/17Mbps/FH, 24p/24Mbps/FX, 24p/17Mbps/FH)	
		MP4: 1440 x 1080 (30fps/12Mbps), VGA: 640 x 480 (30fps/3Mbps)	
*NTSC/PAL compatibility depends on region	PAL	AVCHD: 1920 x 1080 (50p/28Mbps/PS, 50i/24Mbps/FX, 50i/17Mbps/FH, 25p/24Mbps/FX, 25p/17Mbps/FH)	
		MP4: 1440 x 1080 (25fps/12Mbps), VGA: 640 x 480 (25fps/3Mbps)	

Media	
Media	<i>Memory Stick PRO Duo™</i> , <i>Memory Stick PRO-HG Duo™</i> , SD memory card, SDHC memory card (UHS-I compliant), SDXC memory card (UHS-I compliant)
Slot	Memory Stick Duo/ SD memory card
Noise reduction	
Noise reduction	Long exposure NR: On/Off, available at shutter speeds longer than 1 sec. High ISO NR: High/Normal/Low
Multi frame noise reduction	Auto/ISO 100 to 25600
White Balance	

Modes	Auto WB, Daylight, Shade, Cloudy, Incandescent, Fluorescent (Warm white/Cool white/Day white/Daylight), Flash, C Temp 2500 to 9900K, C Filter G7 to M7, 15-step, Custom, AWB micro adjustment
Two-axis fine adjustment	Available in all modes <G7 to M7 (15 steps), A7 to B7 (15 steps)>
Bracketing	3 frames, H/L selectable

Focus system	
Type	TTL phase-detection AF
Focus sensor	CCD line sensors
Focus point	15 points (3 points cross type)
Sensitivity range	EV -1 to 18 (at ISO100 equivalent with F2.8 lens attached)
Focus mode	Autofocus, Manual Focus
AF mode	Single-shot AF (AF-S), Continuous AF (AF-C), Automatic AF (AF-A) selectable
Focus area	Wide (auto, 15 points), Zone, Spot, Local
Other features	Tracking Focus, Predictive control (AF-A,AF-C), Focus lock, Eye-start AF,AF illuminator (built-in flash type)
Exposure control	
Metering type	1200-zone evaluative metering
Metering sensor	<i>Exmor</i> APS HD CMOS sensor
Metering sensitivity	EV -2 to EV 17 (at ISO 100 equivalent with F1.4 lens attached)
Modes	Multi segment, Center weighted, Spot
Exposure modes	AUTO, Flash Off, AUTO Advanced (AUTO+), Scene Selection, Sweep Panorama, 3D Sweep Panorama, Continuous Advance Priority AE, Movie, Programmed AE (P), Aperture priority (A), Shutter-speed priority (S), Manual (M)
Scene Selection	Portrait, Landscape, Macro, Sports Action, Sunset, Night Portrait, Night View, Hand-held Twilight
Exposure compensation	±3.0 EV (1/3 EV steps)
AE bracketing	Bracket: Cont., Bracket: Single, with 1/3 EV, 2/3 EV increments, 3 frames
AE lock	Available with AE lock button. AE is also locked when focus is locked in multi-segment metering mode.
ISO sensitivity (Recommended Exposure Index)	ISO 100-16000 equivalent,AUTO (ISO 100-1600)

Viewfinder	
Type	XGA OLED, 1.3 cm (0.5 type) electronic viewfinder
Total number of dots	2,359,296 dots
Brightness control	Auto / Manual (3 steps between -1 and +1)
Field coverage	100%
Magnification	Approx. 1.09x (with 50 mm lens at infinity, -1 m ⁻¹)
Dioptr adjustment	-4.0 ~ +3.0 m ⁻¹
Eye point	Approx. 27 mm from the eyepiece lens, 22 mm from the eyepiece frame at -1 diopter (CIPA standard)
Display	Histogram Display, Graphic Display, Digital Level Gauge, Shooting Data Display, SimpleDisplay, Grid Line.
Real-time image adjustment display	Exposure Comp, White Balance, Creative Style



System requirements of bundled software

	Image Data Converter Ver. 4		PMB
OS*	Microsoft Windows ® Windows® XP** SP3, Windows Vista® SP2, Windows 7 SP1	Macintosh Mac OS X (10.5, 10.6 Snow Leopard)	Microsoft Windows ® Windows® XP** SP3, Windows Vista® SP2, Windows 7 SP1
CPU	Pentium 4 or faster	Intel Core Solo, Core Duo, Core 2 Duo or faster	Pentium III 800 MHz or faster (for playing/editing HD movies: Intel Core Duo 1.66 GHz or faster, Intel Core 2 Duo 1.66 GHz or faster, Intel Core 2 Duo 2.26 GHz or faster (HD FX/HD FH), Intel Core 2 Duo 2.40 GHz or faster (HD PS))
Memory	1 GB or more is recommended	1 GB or more is recommended	512 MB or more (for playing/editing HD movies: 1 GB or more)

Trademarks & Remarks

* α is a trademark of Sony Corporation.

- Exmor ^{Exmor}*Exmor*, BIONZ ^{BIONZ}*BIONZ*, BRAVIA BRAVIA, SteadyShot, VAIO ^{VAIO}*VAIO*, InfoLithium ^{InfoLithium}*InfoLithium*, ^{Tru-Finder}*Tru-Finder*, Translucent Mirror Technology ^{Translucent Mirror Technology}*Tru-Finder*, ^{Tru-Finder}*Tru-Finder*, Memory Stick PRO Duo **MEMORY STICK PRO Duo**, and Memory Stick PRO-HG Duo **MEMORY STICK PRO-HG Duo** are trademarks or registered trademarks of Sony Corporation.
- PLAYSTATION is a registered trademark of Sony Computer Entertainment Inc.
- Blu-ray Disc and ^{Blu-ray Disc}*Blu-ray Disc* are trademarks.
- AVCHD ^{AVCHD}*AVCHD* and AVCHD Progressive ^{AVCHD Progressive}*AVCHD* and their respective logos are trademarks of Panasonic Corporation and Sony Corporation.
- SD Logo, SDHC Logo and SDXC Logo are trademarks of SD-3C, LLC.
- HDMI, HDMI Logo, and High-Definition Multimedia Interface are trademarks or registered trademarks of HDMI Licensing LLC in the United States and other countries.
- All other company and product names mentioned herein are used for identification purposes only and may be the trademarks or registered trademarks of their respective owners.
- InfoLithium ^{InfoLithium}*InfoLithium* is a lithium battery pack which can exchange data with compatible electronic equipment about its energy consumption.

Sony recommends that you use the battery pack with electronic equipment bearing the ^{InfoLithium}*InfoLithium* mark.

- Screen displays are simulated.
- Simulated effects are used to illustrate some functions.

LCD monitor	
Type	Xtra Fine, 7.5 cm (3.0 type) TFT drive with TruBlack technology
Total number of dots	921,600 dots
Brightness control	Auto/Manual (5 steps between -2 and +2)
Field coverage	100%
Adjustable angle	Tilt angle: Downward 180 degrees. Rotation angle: Leftward 270 degrees from the position in which the LCD monitor is facing forward.
Display Selector (finder/LCD)	Auto/Manual
Display	Histogram Display, Graphic Display, Digital Level Gauge, Shooting Data Display, Simple Display, Shooting Information For Viewfinder, Grid Line.
Real-time image adjustment display	Exposure Comp, White Balance, Creative Style
Focus Magnifier	5.9x, 11.7x
Peaking MF	Yes (Level: High/Mid/Low/Off, Color: White/Red/Yellow)
Smart Teleconverter (digital zoom without image deterioration)	
	Approx. 1.4 x / 2x

Shutter	
Type	Electronically controlled, vertical-traverse, focal-plane type
Shutter speed	1/4000 second to 30 seconds, Bulb
Flash sync. speed	1/160 second
Electronic front curtain shutter	Yes, On/Off
SteadyShot INSIDE ™ (image stabilization)	
System	For still images: Image Sensor-Shift mechanism. For movies: Electronic
SteadyShot capability	For still images: Approx. 2.5-4.5 EV decrease in shutter speed (varies according to shooting conditions and lens used)
Flash	
Type	Auto popup, built-in
Guide No.	10 (in meters at ISO 100)
Coverage	FOV coverage up to 18 mm (in the focal length)
Control	ADI flash / Pre-flash TTL
Compensation	±2.0 EV (1/3 EV steps)
Bracketing	1/3 EV 2/3 EV steps, 3 frames
Modes	Flash off, Autoflash, Fill-flash, Rear sync., Slow Sync., Red-eye reduction (On/Off)
Recycling time	Approx. 3 sec.
External flash	Sony α System Flash compatible with auto-lock accessory shoe
Wireless control	Yes (wireless flash with lighting ratio control)

Drive	
Drive modes	Single Shot, Continuous (Hi/Lo), Self-timer (10/2 sec. delay), Bracketing (Cont., Single, White Balance), Remote Control (with optional RM-DSLR1)
	Hi: Maximum 8 frames per second, Lo: Maximum 3 frames per second
Continuous shooting speed ¹	Continuous Advance Priority AE: Maximum 10 images per second
	Continuous Advance Priority AE mode: Fine: 17 images, Standard: 18 images, RAW & JPEG: 11 images, RAW: 13 images
Max. continuous shots ¹	Continuous shooting ² : Fine: 18 images, Standard: 18 images, RAW & JPEG: 11 images, RAW: 13 images

Playback	
Modes	Single (with or without shooting information), RGB histogram and highlight/shadow warning, 4/9-frame index view, Enlarged display mode (L: 13.6x, M: 9.9x, S: 6.8x), Auto Review (10/5/2 sec. Off), Image orientation (On/Off), Slideshow, Panorama scrolling, Folder selection (still), Forward/Rewind (movie), Delete, Protect

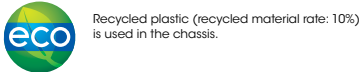
Other features	
	Face detection (up to 8 faces detectable automatically), Face registration, Face selection, Smile shutter (selectable from 3 steps), In-Camera Guide, Custom Function, GPS
Interface	
PC interface	Hi-speed USB (USB 2.0): Mass-storage, MTP
HD output	HDMI mini connector (Type-C), BRAVIA Sync (link menu), PhotoTV HD
Others	Sync. Terminal, Auto-lock accessory shoe, Microphone jack, DC IN terminal, Remote terminal

Compatible OS (USB connection)	
	Windows XP ³ SP3, Windows Vista ⁴ SP2, Windows 7 SP1, Mac OS X (10.3-10.6)

Audio	
Microphone	Built-in stereo microphone or ECM-ALST1 / ECM-CG50 (sold separately)
Speaker	Built-in, monoaural, volume settings in 8 steps
Print	
Compatible standards	Exif Print, Print Image Matching III, DPOF setting
Custom function	
Type	Custom key settings
Power	

Main specifications of **α57**








Type	
Camera type	Interchangeable-lens digital camera with built-in flash
Lens compatibility	
Lens compatibility	Sony A-mount lenses, operation with Minolta/Konica Minolta lenses confirmed
Image sensor	
Type	APS-C size (23.5 x 15.6 mm), <i>Exmor</i> APS HD CMOS sensor with primary color filters
Number of pixels (effective)	Approx. 16.1 megapixels
Number of pixels (total)	Approx. 16.7 megapixels
Image sensor aspect ratio	3:2
Anti-dust system	Charge protection coating on Low-Pass Filter and Image Sensor-Shift mechanism
Recording system (still image)	
Recording format	JPEG (DCF Ver. 2.0, Exif Ver. 2.3, MPF Baseline compliant), RAW (Sony ARW 2.3 format), 3D MP0 (MPF Extended compliant)
Image size (pixels)	3:2 aspect ratio L: 4912 x 3264 (16M), M: 3568 x 2368 (8.4M), S: 2448 x 1624 (4.0M)
	16:9 aspect ratio L: 4912 x 2760 (14M), M: 3568 x 2000 (7.1M), S: 2448 x 1376 (3.4M)
	Sweep Panorama Wide: horizontal 12,416 x 1,856 (23M), vertical 5,536 x 2,160 (12M), Standard: horizontal 8,192 x 1,856 (15M), vertical 3,872 x 2,160 (8.4M)
	3D Sweep Panorama Wide: 7152 x 1080 (7.7M), Standard: 4912 x 1080 (5.3M), 16:9: 1920 x 1080 (2.1M)
Image quality modes	RAW, RAW & JPEG, JPEG Fine, JPEG Standard
Picture Effect	11 modes (15 effects): Posterization (Color, B/W), Pop Color, Retro Photo, Partial Color (R,G,B,Y), High Contrast Monochrome, Toy Camera, Soft High-key, Soft Focus, HDR Painting, Rich-tone Monochrome, Miniature
Creative Style	Standard, Vivid, Portrait, Landscape, Sunset, B/W (Contrast -3 to +3 steps, Saturation -3 to +3 steps, Sharpness -3 to +3 steps)
Dynamic range functions	Off, Dynamic Range Optimizer (Auto/Level), Auto High Dynamic Range, Off, Auto Exposure Difference, Exposure Difference Level (1-6 EV, 1.0 EV step)
Color space	sRGB, Adobe RGB
Recording system (movie)	
Recording format	AVCHD 2.0 (Progressive) / MP4
Video compression	MPEG-4 AVC (H.264)
Audio recording format	Dolby Digital (AC-3) / MPEG-4 AAC-LC
Image size (pixels)	NTSC AVCHD: 1920 x 1080 (60p/28Mbps/PS, 60/24Mbps/FX, 60/17Mbps/FH, 24p/24Mbps/FX, 24p/17Mbps/FH) MP4: 1440 x 1080 (30fps/12Mbps), VGA: 640 x 480 (30fps/3Mbps)
	PAL AVCHD: 1920 x 1080 (50p/28Mbps/PS, 50/24Mbps/FX, 50/17Mbps/FH, 25p/24Mbps/FX, 25p/17Mbps/FH) MP4: 1440 x 1080 (25fps/12Mbps), VGA: 640 x 480 (25fps/3Mbps)
	* NTSC/PAL compatibility depends on region
Media	
Media	<i>Memory Stick PRO Duo™</i> , <i>Memory Stick PRO-HG Duo™</i> , SD memory card, SDHC memory card, SDXC memory card
Slot	Memory Stick Duo/ SD memory card
Noise reduction	
Noise reduction	Long exposure NR: On/Off, available at shutter speeds longer than 1 sec. High ISO NR: High/Normal/Low
Multi frame noise reduction	Auto/ISO 100 to 25600
White balance	
Modes	Auto WB, Daylight, Shade, Cloudy, Incandescent, Fluorescent (Warm white/Cool white/Day white/Daylight), Flash, C. Temp 2500 to 9900K, C Filter G7 to M7, 15-step, Custom, AWB micro adjustment
Two-axis fine adjustment	Available in all modes <G7 to M7 (15 steps), A7 to B7 (15 steps)>
Bracketing	3 frames, HVL selectable
Focus system	
Type	TTL phase-detection AF
Focus sensor	CCD line sensors
Focus point	15 points (3 points cross type)
Sensitivity range	EV -1 to 18 (at ISO 100 equivalent with F2.8 lens attached)
Focus mode	Autofocus, Manual Focus
AF mode	Single-shot AF (AF-S), Continuous AF (AF-C), Automatic AF (AF-A) selectable
Focus area	Wide (auto, 15 points), Zone, Spot, Local
Other features	Tracking Focus, Predictive control (AF-A, AF-C), Focus lock, Eye-start AF, AF illuminator (built-in flash type)
Exposure control	
Metering type	1200-zone evaluative metering
Metering sensor	<i>Exmor</i> APS HD CMOS sensor
Metering sensitivity	EV -2 to EV 17 (at ISO 100 equivalent with F1.4 lens attached)
Modes	Multi segment, Center weighted, Spot
Exposure modes	iAUTO, Flash Off, Superior Auto, Scene Selection, Sweep Panorama, 3D Sweep Panorama, Continuous Advance Priority AE, Movie, Programmed AE (P), Aperture priority (A), Shutter-speed priority (S), Manual (M)
Scene Selection	Portrait, Landscape, Macro, Sports Action, Sunset, Night Portrait, Night View, Hand-held Twilight
Exposure compensation	±3.0 EV (1/3 EV steps)
AE bracketing	Bracket: Cont., Bracket: Single, with 1/3 EV, 2/3 EV increments, 3 frames
AE lock	Available with AE lock button. AE is also locked when focus is locked in multi-segment metering mode.
ISO sensitivity (Recommended Exposure Index)	ISO 100-16000 equivalent, AUTO (ISO 100-3200)
Viewfinder	
Type	SVGA 1.2 cm (0.46 type) electronic viewfinder (color), Xtra Fine
Total number of dots	1,440,000 dots equivalent
Effective number of dots	Maximum: 1,440,000 dots equivalent, Standard: 1,253,280 dots equivalent
Brightness control	Auto / Manual (3 steps between -1 and +1)
Field coverage	100%
Magnification ¹⁾	Maximum: Approx. 1.04x, Standard: Approx. 0.97x
Dioptr adjustment	-4.0 – +3.0 m ⁻¹
Eye point	Maximum: 23.1 mm from the eyepiece, 18 mm from the eyepiece frame at -1 diopter (CIPA standard)
	Standard: 25.2 mm from the eyepiece, 20.1 mm from the eyepiece frame at -1 diopter (CIPA standard)
Display	Histogram Display, Graphic Display, Digital Level Gauge, Shooting Data Display, Simple Display, Grid Line,
Real-time image adjustment display	Exposure Comp, White Balance, Creative Style



System requirements of bundled software

	Image Data Converter Ver.4	PMB
OS*	Microsoft Windows ® Windows® XP** SP3, Windows Vista® SP2, Windows 7 SP1	Microsoft Windows ® Windows® XP** SP3, Windows Vista® SP2, Windows 7 SP1
CPU	Pentium 4 or faster	Pentium III 800 MHz or faster (for playing/editing HD movies: Intel Core Duo 1.66 GHz or faster, Intel Core 2 Duo 1.66 GHz or faster, Intel Core 2 Duo 2.26 GHz or faster (HD FX/HD FH), Intel Core 2 Duo 2.40 GHz or faster (HD PS))
Memory	1 GB or more is recommended	512 MB or more (for playing/editing HD movies: 1 GB or more)

Trademarks & Remarks

- * α is a trademark of Sony Corporation.
- * Exmor *Exmor*, BIONZ **BIONZ**, BRAVIA BRAVIA, SteadyShot, VAIO *VAIO*, InfoLITHIUM , Memory Stick , Translucent Mirror Technology , Tru-Finder , *Memory Stick PRO Duo* **MEMORY STICK PRO Duo**, and Memory Stick PRO-HG Duo **MEMORY STICK PRO-HG Duo** are trademarks or registered trademarks of Sony Corporation.
- * PLAYSTATION is a registered trademark of Sony Computer Entertainment Inc.
- * Blu-ray Disc and  are trademarks.
- * AVCHD **AVCHD**® and AVCHD Progressive *Progressive* are trademarks and their respective logos are trademarks of Panasonic Corporation and Sony Corporation.
- * SD Logo, SDHC Logo and SDXC Logo are trademarks of SD-3C, LLC.
- * HDMI, HDMI Logo, and High-Definition Multimedia Interface are trademarks or registered trademarks of HDMI Licensing LLC in the United States and other countries.
- * All other company and product names mentioned herein are used for identification purposes only and may be the trademarks or registered trademarks of their respective owners.
- * InfoLITHIUM  is a lithium battery pack which can exchange data with compatible electronic equipment about its energy consumption. Sony recommends that you use the battery pack with electronic equipment bearing the  mark.

- Screen displays are simulated.
- Simulated effects are used to illustrate some functions.


Main specifications of **α58**

Type	
Camera type	Interchangeable-lens digital camera with built-in flash
Lens compatibility	
Lens compatibility	Sony A-mount lenses, operation with Minolta/Konica Minolta lenses confirmed
Image sensor	
Type	APS-C size (23.2 x 15.4 mm), <i>Exmor</i> APS HD CMOS sensor with primary color filters
Number of pixels (effective)	Approx. 20.1 megapixels
Number of pixels (total)	Approx. 20.4 megapixels
Image sensor aspect ratio	3:2
Anti-dust system	Charge protection coating on image sensor and Image Sensor-Shift mechanism
Recording system (still image)	
Recording format	JPEG (DCF Ver. 2.0, Exif Ver. 2.3, MPF Baseline compliant), RAW (Sony ARW 2.3 format)
Image size (pixels)	3:2 aspect ratio L: 5456 x 3632 (20M), M: 3872 x 2576 (10M), S: 2736 x 1824 (5M)
	16:9 aspect ratio L: 5456 x 3064 (17M), M: 3872 x 2176 (8.4M), S: 2736 x 1536 (4.2M)
	Sweep Panorama Wide: horizontal 12,416 x 1,856 (23M), vertical 5,536 x 2,160 (12M), Standard: horizontal 8,192 x 1,856 (15M), vertical 3,872 x 2,160 (8.4M)
	Image quality modes RAW, RAW & JPEG, JPEG Fine, JPEG Standard
Picture Effect	11 modes (15 effects): Posterization (Color, B/W), Pop Color, Retro Photo, Partial Color (R,G,B,Y), High Contrast Monochrome, Toy Camera, Soft High-key, Soft Focus, HDR Painting, Rich-tone Monochrome, Miniature
Creative Style	Standard, Vivid, Portrait, Landscape, Sunset, B/W (Contrast -3 to +3 steps, Saturation -3 to +3 steps, Sharpness -3 to +3 steps)
Dynamic range functions	Off, Dynamic Range Optimizer (Auto/Level (1-5)), Auto High Dynamic Range, Auto Exposure Difference, Exposure Difference Level (1-6 EV, 1.0 EV step)
Color space	sRGB standard (with sYCC gamut) and Adobe RGB standard compatible with TRILUMINOS™ Color
Recording system (movie)	
Recording format	AVCHD Ver. 2.0 compliant / MP4
Video compression	MPEG-4 AVC (H.264)
Audio recording format	Dolby Digital (AC-3) / MPEG-4 AAC-LC, 2ch
Image size (pixels)	1080 60i compatible device AVCHD: 1920 x 1080 (60/30 fps/24 Mbps/FX, 60/30 fps/17 Mbps/FH, 24p/24 Mbps/FX, 24p/17 Mbps/FH) MP4: 1440 x 1080 (30 fps/12 Mbps), 640 x 480 (30 fps/3 Mbps)
	1080 50i compatible device AVCHD: 1920 x 1080 (50/25 fps/24 Mbps/FX, 50/25 fps/17 Mbps/FH, 25p/24 Mbps/FX, 25p/17 Mbps/FH) MP4: 1440 x 1080 (25 fps/12 Mbps), 640 x 480 (25 fps/3 Mbps)
	Color space xxVCC standard (xxColor™ when connected via HDMI cable) compatible with TRILUMINOS™ Color
	Media <i>Memory Stick PRO Duo</i> , <i>Memory Stick PRO-HG Duo</i> , <i>Memory Stick XC-HG Duo</i> , SD memory card, SDHC memory card, SDXC memory card
Slot	Multi slot for Memory Stick Duo/SD memory card
Noise reduction	
Noise reduction	Long exposure NR: On/Off, available at shutter speeds longer than 1 sec. High ISO NR: High/Normal/Low selectable
Multi frame noise reduction	Auto/ISO 100 to 25600
White balance	
Modes	Auto WB, Daylight, Shade, Cloudy, Incandescent, Fluorescent (Warm white/Cool white/Day white/Daylight), Flash, C. Temp 2500 to 9900K, C Filter G7 to M7, 15-step, Custom, AWB micro adjustment
AWB micro adjustment	Available in all modes <G7 to M7 (15 steps), A7 to B7 (15 steps)>
Bracketing	3 frames, HVL selectable
Focus system	
Type	TTL phase-detection AF
Focus sensor	CCD line sensors
Focus point	15 points (3 points cross type)
Sensitivity range	EV -1 to 18 (at ISO 100 equivalent with F2.8 lens attached)
Focus mode	Autofocus, Manual Focus selectable
AF mode	Single-shot AF (AF-S), Continuous AF (AF-C), Automatic AF (AF-A) selectable
Focus area	Wide (auto, 15 points), Zone, Spot, Local
Lock-on AF	Yes
Other features	Predictive control (AF-A, AF-C), Focus lock, Eye-start AF, AF illuminator (built-in flash type, range: Approx. 1-5 m)
Exposure control	
Metering type	1200-zone evaluative metering
Metering sensor	<i>Exmor</i> APS HD CMOS sensor
Metering sensitivity	EV -2 to EV 17 (at ISO 100 equivalent with F1.4 lens attached)
Modes	Multi segment, Center weighted, Spot
Exposure modes	iAUTO, Flash Off, Superior Auto, Scene Selection, Sweep Panorama, Tele-zoom Continuous Advance Priority AE, Movie, Picture Effect, Programmed AE (P), Aperture priority (A), Shutter-speed priority (S), Manual (M)
Scene Selection	Portrait, Landscape, Macro, Sports Action, Sunset, Night Portrait, Night Scene, Hand-held Twilight
Exposure compensation	Still images: +/−3.0 EV (0.3 EV steps), Movies: +/−2.0 EV (0.3 EV steps)
AE bracketing	Bracket: Cont., Bracket: Single, with 0.3 EV, 0.7 EV, 1 EV, 2 EV, 3 EV increments, 3 frames
AE lock	Available with AE lock button. AE is also locked when focus is locked in multi-segment metering mode.
ISO sensitivity (Recommended Exposure Index)	Still images: AUTO (ISO 100 - 3200) / ISO 100 - 16000 (1 EV step), Movies: AUTO (ISO 100 - 3200 equivalent) / ISO 100 - 3200 equivalent (1 EV step)
Viewfinder	
Type	1.0 cm (0.39 type) electronic viewfinder (color), Xtra Fine
Total number of dots	1,440,000 dots
Effective number of dots	1,440,000 dots
Brightness control	Auto / Manual (3 steps between -1 and +1)
Color temperature control	Manual (5 steps)
Field coverage	100%
Magnification ¹⁾	Approx. 0.88x
Dioptr adjustment	-4 to +4 m ⁻¹
Eye point	Maximum: 26.5 mm from the eyepiece, 23 mm from the eyepiece frame at -1 diopter (CIPA standard)
Display	Graphic Display / Display All Info. / No Disp. Info. / Histogram
Real-time image adjustment display	On/Off
LCD screen	
Type	6.7 cm (2.7 type) TFT drive (Clear Photo LCD)
Total number of dots	460,800 dots
Brightness control	Manual (5 steps between -2 and +2)
Field coverage	100%
Adjustable angle	Up approx. 135 degrees, down approx. 55 degrees
Display Selector (viewfinder/LCD)	Auto/Manual
Display	Graphic Display / Display All Info. / No Disp. Info. / Histogram / For viewfinder
Real-time image adjustment display	On/Off

System requirements of bundled software

	Image Data Converter Ver.4	PlayMemories Home
OS*	Microsoft Windows® Windows® XP** SP3, Windows Vista® SP2, Windows® 7 SP1, Windows® 8	Microsoft Windows® Windows® XP** SP3, Windows Vista® SP2, Windows® 7 SP1, Windows® 8
CPU	Pentium 4 or faster	Pentium III 800 MHz or faster (for playing/editing HD movies: Intel Core Duo 1.66 GHz or faster, Intel Core 2 Duo 1.66 GHz or faster, Intel Core 2 Duo 2.26 GHz or faster (HD FX/HD FH), Intel Core 2 Duo 2.40 GHz or faster (HD PS))
Memory	1 GB or more is recommended	512 MB or more (for playing/editing HD movies: 1 GB or more)

Trademarks & Remarks

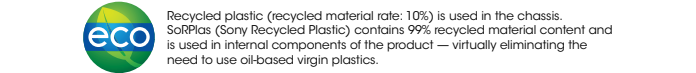
- "Sony", "make.believe", "α", "Exmor", "BIONZ", "BRAVIA", "SteadyShot", "VAIO", "InfoLITHIUM", "Translucent Mirror Technology", "Tru-Finder", "G Lens", "Memory Stick", "Memory Stick PRO Duo", "Memory Stick XC-HG Duo", "Memory Stick PRO-HG Duo", "Multi Interface Shoe", "PlayMemories Studio", "PlayMemories Home", "PlayMemories Online", "TRILUMINOS", "TRILUMINOS Color" and "TRILUMINOS Display" are trademarks or registered trademarks of Sony Corporation.
- "Xperia" is a trademark or registered trademark of Sony Mobile Communications AB.
- "PlayStation" is a registered trademark of Sony Computer Entertainment Inc.
- "AVCHD" is a trademark of Panasonic Corporation and Sony Corporation.
- SD Logo, SDHC Logo and SDXC Logo are trademarks of SD-3C, LLC.
- InfoLITHIUM  is a lithium battery pack which can exchange data with compatible electronic equipment about its energy consumption.
- All other company and product names mentioned herein are used for identification purposes only and may be the trademarks or registered trademarks of their respective owners.
- "InfoLITHIUM" is a lithium battery pack which can exchange data with compatible electronic equipment about its energy consumption.
- Sony recommends that you use the battery pack with electronic equipment bearing the "InfoLITHIUM" mark.
- Screen displays and effects used to illustrate some functions are simulated.

Focus Magnifier	6.8x, 13.6x
Peaking MF	Yes (Level: High/Mid/Low/Off, Color: White/Red/Yellow)
Zoom	
	Clear Image Zoom: Still images 2x Smart Zoom (still images) M: 1.4x, S: 2x Digital Zoom (still images) 4x Digital Zoom (movie) 4x
Shutter	
Type	Electronically controlled, vertical-traverse, focal-plane type
Shutter speed	Still images: 1/4000 to 30 sec/Bulb, Movies: 1/4000 to 1/4 (1/3 step), up to 1/30 in AUTO mode
Flash sync. speed	1/160 second
Electronic front curtain shutter	Yes, On/Off
SteadyShot INSIDE (image stabilization)	
System	For still images: Image Sensor-Shift mechanism, For movies: Electronic
SteadyShot capability	For still images: Approx. 2.5-4.5 EV decrease in shutter speed (varies according to shooting conditions and lens used)
Flash	
Type	Auto popup, built-in
Guide No.	10 (in meters at ISO 100)
Coverage	18mm (focal-length printed on the lens body)
Control	ADI flash / Pre-flash TTL
Compensation	±2.0 EV (0.3 EV steps)
Bracketing	0.3 EV, 0.7 EV, 1 EV, 2 EV, 3 EV steps, 3 frames
Modes	Flash off, Auto/flash, Fill-flash, Rear sync., Slow Sync., Red-eye reduction (On/Off selectable), Wireless ¹⁾ , Hi-speed sync ²⁾
Recycling time	Approx. 4 sec
External flash	Sony α System Flash compatible with Multi Interface Shoe. Attach the optional shoe adaptor (ADP-MAA) for flash compatible with Auto-lock Accessory Shoe.
Wireless control	Yes (wireless flash with lighting ratio control)
Drive	
Drive modes	Single Shooting, Continuous Shooting (Hi/Ls selectable), Self-timer (10/2 sec. delay selectable), Bracketing (Cont., Single, White Balance)
Continuous shooting speed ³⁾	Hi: Maximum 5 frames per second, Lo: Maximum 2.5 frames per second Tele-zoom Continuous Advance Priority AE: Maximum 8 frames per second Tele-zoom Continuous Advance Priority AE: Fine: 16 frames, Standard: 19 frames Continuous shooting ⁴⁾ : Fine: 7 frames, Standard: 8 frames, RAW & JPEG: 5 frames, RAW: 6 frames
Playback	
Modes	Single (with or without shooting information), RGB histogram and highlight/shadow warning, 4/9-frame index view, Enlarged display mode (L: 15.6x, M: 11x, S: 7.7x), Auto Review (10/5/2 sec. Off), Image orientation (On/Off), Slideshow, Panorama scrolling, Folder selection (still), Forward/Rewind (movie), Delete, Protect
Other features	
	Auto Object Framing, Face Detection (up to 8 faces detectable automatically), Face Registration, Face Selection, Smile Shutter (selectable from 3 steps), In-Camera Guide, Custom Function
Interface	
PC interface	Multi/Micro USB Terminal ⁵⁾ , Hi-speed USB (USB 2.0): Mass-storage, MTP/Multi (REMOTE)/Micro USB type B
HD output	HDMI mini connector (Type-D), BRAVIA Sync (link menu), PhotoTV HD
Others	Multi Interface Shoe, Microphone jack, DC IN terminal
Compatible OS (USB connection)	Windows XP ⁶⁾ SP3, Windows Vista ⁷⁾ SP2, Windows 7 SP1, Windows 8, Mac OS X (10.5-10.8)
Audio	
Microphone	Built-in stereo microphone or ECM-YXST1M / ECM-OG50 (sold separately)
Speaker	Built-in, monaural, volume settings in 8 steps between 0 and 7.
Print	
Compatible standards	Exif Print, Print Image Matching III, DPOF setting
Custom function	
Type	Custom key settings
Power	
Battery	Rechargeable battery pack NP-FM500H
Still images	Approx. 690 shots with viewfinder and 700 shots with LCD screen (CIPA standard)
Movies	Actual ^{8,9)} : Approx. 160 min. with viewfinder and 160 min. with LCD screen (CIPA standard) Continuous ^{9,10)} : Approx. 270 min. with viewfinder and 265 min. with LCD screen (CIPA standard)
External power	AC Adaptor AC-PW10AM (optional)
Weight	
With battery and Memory Stick PRO Duo	Approx. 573 g (1 lb 4.2 oz)
Body only	Approx. 492 g (1 lb 1.4 oz)
Dimensions	
(W x H x D) (excluding protrusions)	Approx. 128.6 x 95.5 x 77.7 mm
Body material	
Body material	High-grade plastic exterior
Operating temperature	
Range	0°C to 40°C (32°F to 104°F)

Specifications and features are based on information available at the time of printing and are subject to change without notice.

- ¹⁾ With 50 mm lens at infinity, -1 m⁻¹
- ²⁾ With compatible external flash
- ³⁾ Speed may vary depending on shooting conditions and memory card in use.
- ⁴⁾ When drive mode is set to continuous shooting "Hi" mode.
- ⁵⁾ Supports Micro USB compatible devices.
- ⁶⁾ 64-bit and Starter Editions are not supported.
- ⁷⁾ Starter Edition is not supported.
- ⁸⁾ Continuous movie recording is possible for approximately 29 minutes (limited by product specifications).
- ⁹⁾ Indicated recording time is defined by repeating the following cycle: Power on, start recording, zoom, stand-by and power off.
- ¹⁰⁾ Indicated recording time is defined by repeating the following cycle: Pressing the MOVIE button. No other operations such as zoom are performed.

Let the world see your best photograph. Enter the Sony World Photography Awards today.



The computer environment must also satisfy the operating requirements of the OS.
* Must be installed with the above OS at delivery. Proper operation cannot be guaranteed with an upgraded OS environment.
** 64-bit and Starter Editions are not supported. Windows Image Mastering API (IMAPI) Ver. 2.0 or later is required for disc burning function.



Professional quality in a compact body

Two keys to outstanding photos and movies

You won't see them but they are there: Sony's 16.1 megapixel* Exmor™ APS HD CMOS sensor and BIONZ™ image processing engine. This winning combination — the same as found in higher-grade DSLR cameras — delivers richly detailed images with smooth tonal gradations and vivid colors thanks to the large APS-C sensor. The high resolution gives you a great deal of freedom when cropping so you can create the most pleasing composition without sacrificing image quality.

* Effective pixels (approx.)

Exmor™
APS HD CMOS

BIONZ

APS-C
SENSOR



NEX-3N

APS-C
SENSOR



- Exmor™ APS HD CMOS sensor with 16.1 effective megapixels (approx.)
- The world's smallest and lightest camera*
- 180° tiltable 3.0-type (7.5 cm) LCD screen
- Easy self-portraits and a new zoom lever
- Built-in flash
- New Auto Object Framing

* Among interchangeable-lens cameras with an APS-C sensor and built-in flash as of February 2013.

MRP Rs. 29,990/-

SPECIAL REGISTRATION OFFER



For more information, visit: www.sony.co.in/registration

NEX-5R

APS-C
SENSOR



- Exmor™ APS HD CMOS sensor with 16.1 megapixels*
- Interchangeable lens: Sony E-Mount
- Newly developed Fast Hybrid AF
- Touch screen with Touch Shutter function
- 180° tiltable 3.0-type (7.5 cm) Xtra Fine LCD screen
- Built-in Wi-Fi

* Effective pixels (approx.)

Full HD
1080

16.1
MEGA
PIXELS

Wi-Fi
CERTIFIED

MRP Rs. 39,990/-

SPECIAL REGISTRATION OFFER



For more information, visit: www.sony.co.in/registration

NEX-6

APS-C
SENSOR



- Exmor™ APS HD CMOS sensor with 16.1 megapixels*
- Interchangeable lens: Sony E-Mount
- Newly developed Fast Hybrid AF
- Two dials for DSLR-like operation
- Electronic viewfinder (XGA OLED Tru-Finder™)
- Built-in Wi-Fi
- Multi interface shoe

* Effective pixels (approx.)

Full HD
1080

16.1
MEGA
PIXELS

Wi-Fi
CERTIFIED



Electronic View Finder

MRP Rs. 49,990/-

SPECIAL REGISTRATION OFFER



For more information, visit: www.sony.co.in/registration

Compatible lens for NEX

ZOOM LENS				FIXED FOCAL LENGTH LENS				
SEL1018_A MRP Rs. 59,990/-	SEL18200_A MRP Rs. 49,990/-	SEL55210_A MRP Rs. 19,990/-	SEL16F28_A MRP Rs. 15,990/-	SELP1650 MRP Rs. 19,990/-	SEL30M35_A MRP Rs. 14,990/-	SEL35F18_A MRP Rs. 24,990/-	SEL50F18_A MRP Rs. 19,990/-	SEL24F18Z_A MRP Rs. 54,990/-

Other Accessories

Rechargeable Battery Pack
NP-FW50
MRP Rs. 3,490/-

Battery Charger
BC-VW1
MRP Rs. 3,490/-

Coming Soon
USB AC Adaptor*
AC-UD10
(100v-240V)
MRP Rs. 1,790/-
*Charging only

Remote Commander
RMT-DSLR2
MRP Rs. 2,490/-

Advanced Quick Auto Focus Live View

New autofocus system for DSLR-like response

NEX is equipped with Sony's Fast Hybrid AF* — an innovation that combines the hyper-responsiveness of phase-detection AF with the precision of contrast-detection AF. First, fast phase-detection AF quickly moves the lens to bring the subject into near focus after which highly precise contrast-detection AF finishes focusing. It all happens in the blink of an eye so you're always assured of capturing every fleeting moment.

* See "Lens support for Fast Hybrid AF" on the back cover for details on compatible lenses.

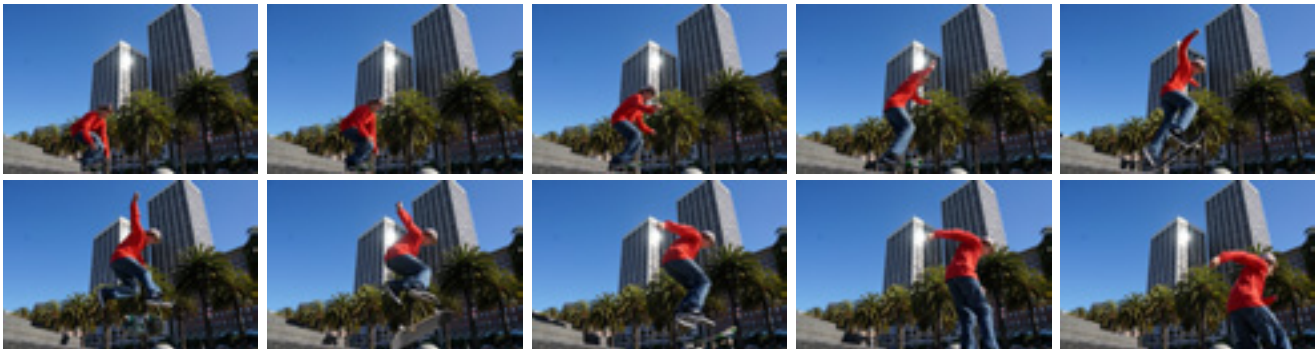


*Only in NEX 5R & NEX 6

10 Frames Per Second Continuous Shooting#

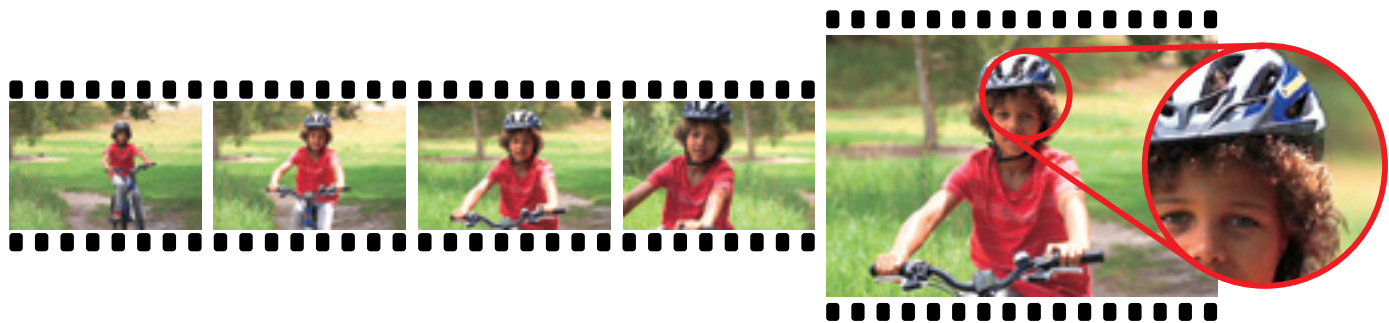
10 fps high-speed continuous shooting

Rely on NEX to flawlessly capture any fast-breaking action. Speed Priority Continuous mode is capable of a blazing 10 fps while maintaining focus on the subject thanks to Fast Hybrid AF, producing exciting action sequences with each frame perfectly focused.



*Only in NEX 5R & NEX 6

Continuous AF for & Full HD Movie Recording



Picture Effect — Your key to an exciting photographic adventure

Creativity comes easy with NEX-6 thanks to Picture Effect. 11 modes with 15 total effects — such as Partial Color, Posterization, Toy Camera, High Contrast Monochrome, HDR Painting and more — give you the means to transform everyday photos into impressive works of art. As you apply effects, results are shown in real-time on the LCD screen*.

* The following modes are not displayed in real-time and cannot be applied to movies: HDR Painting, Rich-tone Monochrome, Soft Focus and Miniature.



HDR Painting



Miniature



Soft Focus



Retro Photo



Partial Color (Red)



Soft High-key



Pop Color



Posterization (Color)

Wi-Fi connectivity with mobile devices and more

Built-in Wi-Fi lets you view photos on just about any wireless-compatible device. For smartphones and tablet PCs, simply install PlayMemories Mobile — a free mobile app — and transfer photos directly from the camera. You can also connect wirelessly to compatible wide-screen TVs to view photos, using the camera as a remote control. And when it's time to download photos and movies to a PC on which PlayMemories Home is installed, do it wirelessly without bothering with cables.



Preserving the natural beauty of delicately lit low-light scenes

Never worry about ruining the lovely atmosphere of a warmly lit interior or sparkling night scene. The ultra-high ISO of 25600 lets you shoot without flash for images that faithfully convey the ambience of the setting, while NEX-6's noise reduction technology markedly reduces noise that occurs when shooting at high ISO sensitivity. You'll also appreciate the freedom high ISO sensitivity provides, allowing you to shoot at fast shutter speeds to eliminate the need for a tripod or to capture fast-moving action.



180° tiltable LCD screen for expressive self-portraits*

NEX-5R is the camera for fantastic self-portraits thanks to its 3.0-type 921K-dot Xtra Fine LCD screen that tilts completely forward 180° and down approx. 50°. You'll be able to compose carefully for more and movies. Include someone dear to your heart or frame yourself perfectly against a striking background. For added convenience, after pressing the shutter, the camera counts down for three seconds so you can put on your best face for the shot, pleasing and compelling photos



*Only in NEX 3N & 5R

DSC-RX100



1.0 TYPE
SENSOR



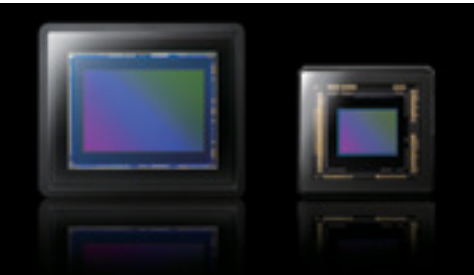
Professional Quality in Compact body

- 1.0 type (13.2 x 8.8mm) "Exmor" CMOS sensor, aspect ratio 3:2
- 20.2 megapixels
- Carl Zeiss Vario-Sonnar T lens
- BIONZ image processing engine for optimised noiseless depiction
- Comfortable control ring for manual operation
- Optical SteadyShot for image stabilization
- 7.62 cm (3) xtra fine LCD
- New WhiteMagic™ Technology

MRP Rs. 34,990/-



Enormous 1.0 type CMOS image sensor



1.0 type (13.2 x 8.8 mm) Exmor CMOS sensor
Generic 1/2.3 type (7.76 mm diagonal) sensor

The huge dimensions of this specially developed Exmor CMOS sensor capture more light from your scene and reproduce every stunning detail with greater fidelity. Original dual noise reduction and column A/D conversion also decrease noise to ensure smooth, clear reproduction even in low-light conditions at approx. 20.2-megapixel effective resolution.

Benefits of 4 times* larger image sensor

- More details
- More brightness
- More focus on the subject

Professional Quality with 4times* larger image sensor



1.0 type (13.2 x 8.8 mm) Sony RX100 Exmor CMOS sensor



Conventional 1/2.3 type (7.76 mm diagonal) sensor

*Disclaimer: RX100 image sensor size approx. 4 times that of a conventional camera image sensor.

Accessories



MRP Rs. 4,990/-



Rechargeable battery pack NP-BX1
MRP Rs. 2,290/-

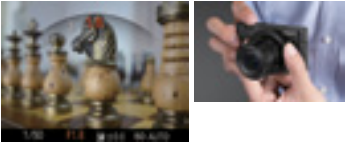


Battery charger BC-TRX
MRP Rs. 2,990/-

Manual Control

Intuitively adjust settings with the control ring and interface.

Get SLR-like handling with a full range of controls for video and still shooting-from Program, Aperture Priority, Shutter Priority and Manual (P/A/S/M) modes for more advanced photographers, to an incredibly effective iAuto mode perfect for beginners. On-screen prompts help you refine your skills, build confidence and exercise greater creative control.

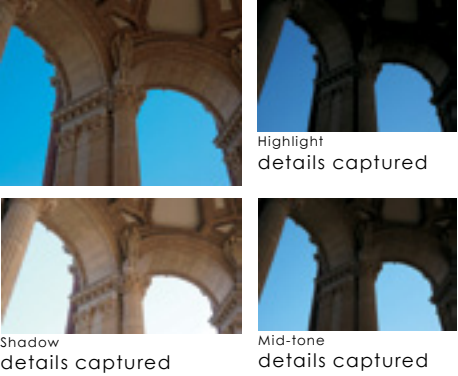


Instantly access functions with the function button.

Your favorite, most frequently used functions are only a press away thanks to the easily customizable function button. Just press the button and turn the control ring for the ultimate in carefree parameter adjustment. Up to 7 functions can be assigned to the function button from a list of 17 possibilities.



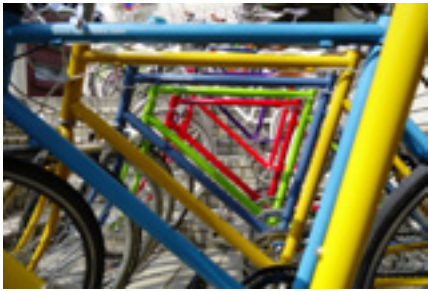
Auto HDR



Final image with optimum shadow/highlight detail

The Auto HDR function strives to capture the full range of tonal gradations, from highlights to shadows, that the human eye can see. The camera continuously takes three images at different exposures after the user presses the shutter button once. The camera then composites the three images to create an optimally exposed jpeg image. No tripod is necessary because subject detection technology takes subject movement into account to ensure precise compositing of the three images.

Part Y Partial Color



Original



Partial Color (Yellow)

Specifications

Image Sensor	
Sensor Type	1.0 type (13.2 x 8.8mm) "Exmor" CMOS sensor, aspect ratio 3:2
Number of pixels	[Effective] Approx. 20.2 megapixels [Gross] Approx. 20.9 megapixels
Lens	
Lens Type	Carl Zeiss Vario-Sonnar T*, 7 elements in 6 groups (4 aspheric elements including AA lens)
F-number (Maximum Aperture)	F1.8 (W) - 4.9 (T)
Aperture Type	Iris diaphragm (7 blades)
Focal Length (f =)	f=10.4 - 37.1mm
35mm film equivalent	[Still Image 3:2] f=28-100mm [Still Image 16:9] f=29-105mm [Still Image 4:3] f=30-108mm [Still Image 1:1] f=36-127mm [Movie 16:9] f=29-105mm (SteadyShot Standard), f=33-120mm (SteadyShot Active mode) [Movie 4:3] f=36-128mm (SteadyShot Standard), f=41-146mm (SteadyShot Active mode)
Focus range (from the front of the lens)	AF approx. 5cm to infinity (W), approx. 55cm to infinity (T)
Optical Zoom	3.6 x (Optical Zoom during movie recording)
Clear Image Zoom**2 Still Image	7.2 x
Digital Zoom**1 Still Image	20M approx. 14x / 10M approx. 20x / 5M approx. 28x / VGA approx. 54x
Movie	14x
Screen	
Screen Type	7.5cm (3.0 type) (4:3) / 1,229,000 dots / Xtra Fine / TruBlack / TFT LCD
Brightness Control	Auto / Manual (5 steps) / Sunny Weather mode
Camera	
SteadyShot	[Still Image] Optical [Movie] Active Mode, Optical type with electronic compensation (Anti-rolling)
Focus Mode	Single-shot AF (AF-S) / Continuous AF (AF-C) / Direct Manual Focus (DMF) / Manual Focus
Focus Area	Multi point AF (25 points) / Center weighted AF / Flexible spot / Flexible spot (tracking focus) / Flexible spot (face tracking)
Light Metering Mode	Multi segment / Center weighted / Spot
Exposure Compensation	+/- 3.0EV, 1/3EV step
ISO Sensitivity (Still Image)*3	Auto (ISO125-6400, selectable with upper / lower limit), 125 / 200 / 400 / 800 / 1600 / 3200 / 6400 (Expandable to ISO 80 / 100) Multi Frame NR: Auto (ISO125-25600), 200 / 400 / 800 / 1600 / 3200 / 6400 / 12800**4 / 25600**4
ISO Sensitivity (Movie)	Auto (ISO125-3200 equivalent), 125 / 200 / 400 / 800 / 1600 / 3200 equivalent
White Balance Mode	Auto / Daylight / Shade / Cloudy / Incandescent / Fluor (Warm White) / Fluor (Cool White) / Fluor (Day White) / Fluor (Daylight) / Flash / Color temperature, Color filter / Custom
Shutter Speed	iAuto (4-1/2000) / Program Auto (1-1/2000) / Manual (Bulb, 30-1/2000) / Aperture Priority (8-1/2000) / Shutter Priority (30-1/2000)
Aperture	F1.8-11 (W), F4.9-11 (T)
Continuous Shooting Speed (maximum)**5	Speed Priority Continuous mode: Approx. 10 fps, continuous mode: 2.5 fps (AF-S)
Image Control	Creative Style, Color Space (sRGB / Adobe), Quality (RAW / RAW + JPEG / Fine / Standard), Long Exposure NR (On / Off), High ISO NR (Normal / High / Low), Multi Frame Noise Reduct.
Dynamic Range Functions	Off, Dynamic Range Optimizer (Auto / Level), Auto High Dynamic Range: Off, Auto exposure difference, Exposure difference level (1.0-6.0EV, 1.0-EV step)
Self-Timer	10sec. / 2sec. / Self portrait / Self timer Cont.
Shooting Mode	Superior Auto, Intelligent Auto, Program Auto (Program shift available), Shutter Priority, Aperture Priority, Manual, Scene Selection, Movie, Sweep shooting

Scene Selection	Portrait, Anti Motion Blur, Sports Action, Pet, Gourmet, Macro, Landscape, Sunset, Night Scene, Hand-held Twilight, Night Portrait, Fireworks, High Sensitivity
Sweep Shooting	Sweep Panorama
Creative Style	Standard, Vivid, Portrait, Landscape, Sunset, Black & White
Picture Effect	Toy Camera, Pop Color, Posterization, Retro Photo, Soft High-key, Partial Color, High Contrast Monochrome, Soft Focus, HDR Painting, Rich-tone Monochrome, Miniature, Watercolor, Illustration
Number of Recognized Scene	[Still Image] 33 [Movie] 44
Flash	Flash Mode Auto / Fill-flash / Slow Sync / Rear Sync / Off
Flash Range	ISO Auto 0.30m to 17.1m (W) / 0.55m to 6.3m (T) ISO 6400 up to 24.2 m (W) / 8.9m (T)
Other Shooting Functions	Face Detection, Face Registration, Smile Shutter, Dual Rec, Grid Line, Digital Level Gauge (pitch and roll), MR (memory recall), Exposure Bracketing, White Balance Bracketing, Peaking, MF Assist, Auto Portrait Framing, Photo Creativity, Shooting Tips
Recording	
Compatible Recording Media**6	Memory Stick Duo, Memory Stick PRO Duo, Memory Stick PRO Duo (High Speed), Memory Stick PRO-HG Duo, Memory Stick Micro**7, Memory Stick Micro (Mark2)**7, SD Memory Card, SDHC Memory Card, SDXC Memory Card, microSD Memory Card**7, microSDHC Memory Card**7
Recording Format	Still Image: JPEG, RAW (Sony ARW 2.3 format), Movie: AVCHD Ver.2.0, MP4
File format	DCF/DPOF
Number of Recorded Pixels (Image Size)	[3:2] L: 20M (5472 x 3648) / M: 10M (3888 x 2592) / S: 5.0M (2736 x 1824) [16:9] L: 17M (5472 x 3080) / M: 7.5M (3648 x 2056) / S: 4.2M (2720 x 1528) [4:3] L: 18M (4864 x 3648) / M: 10M (3648 x 2736) / S: 5.0M (2592 x 1944) / VGA [1:1] L: 13M (3648 x 3648) / M: 6.5M (2544 x 2544) / S: 3.7M (1920 x 1920) Sweep Panorama: Wide (12416 x 1856 / 5536 x 2160), Standard (8192 x 1856 / 3872 x 2160)
Movie Recording Mode	AVCHD: 28M PS (1920x1080, 60p/50p) / 24M FX (1920 x 1080, 60i/50i) / 17M FH (1920x1080, 60i/50i) MP4: 12M (1440 x 1080, 30fps/25fps) / 3M VGA (640 x 480, 30fps/25fps)
Print	Exif Print, PRINT Image Matching (PIM3)
Interface	
Input and Output Terminal	Micro USB, Hi-Speed USB (USB2.0), Micro HDMI
Power	
Power Source	DC3.6V (supplied battery) / DC5.0V (supplied AC Adaptor)
Battery System	NP-BX1 (supplied)
Power Consumption (Camera mode)	Approx. 1.5W
USB Charge/USB Power Supply	Yes (supplied AC adaptor)
Battery Life	[Still Image] Approx. 330 / Approx. 165min. (LCD)**8, [Movie] Approx. 80min.**9
Others	
Other Playback Function	3D viewing mode**10, Control for HDMI, Slideshow
Dimensions (WxHxD) (CIPA compliant)	101.6 x 58.1 x 35.9mm (4"x2 3/8"x1 7/16")
Weight (CIPA compliant)	Approx. 240g (8.5oz.) (Battery and Memory Stick Duo included) / Approx. 213g (7.5 oz.) (Body only)
Supplied Accessory	Rechargeable Battery Pack NP-BX1, AC Adaptor AC-UD10 / 11, Micro USB cable, Wrist Strap, Shoulder Strap Adaptor, Instruction Manual

Shoot Stunning Videos with Sony Professional Handycam



HVR-Z7P

Digital HD Video Camera Recorder

HDV
1080/50i

Full HD
1080



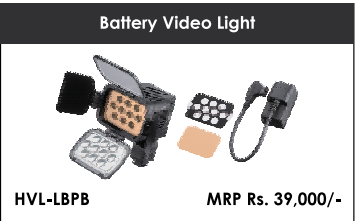
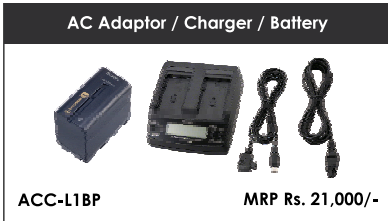
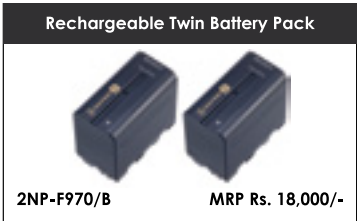
Sony's first professional handheld HDV camcorder with an interchangeable lens system.

- 1/3 type 3 ClearVid CMOS™ Sensor System
- Enhanced Functionality via the Technology of "Exmor"
- Carl Zeiss Lens for HD Video as standard
- Wide Angle: 32mm at 16:9 Video
- Easy-to-use Interchangeable Lens for Fixed-lens Camcorder Users
- Natural-touch Lens Operation
- Wide Range of Lenses with Alpha Lens Compatibility
- HDV Compact Flash Memory Recording Unit in file-based Workflow
- HDV, DVCAM and DV Recording

MRP Rs. 5,30,000/-



Recommended Accessories



HVR-Z5P

Digital HD Video Camera Recorder

HDV
1080/50i

Full HD
1080



Emerging the new world standard camcorder in HD Acquisition

- Sony's Exclusive High-performance "G Lens"
- Natural-touch Lens Operation
- 1/3 type 3 ClearVid CMOS™ Sensor System
- Wide Angle: 29.5mm at 16:9 Video
- Switchable Recording and Playback HDV1080i / DVCAM™ / DV
- Selectable Native and Progressive Scan Modes
- HYBRID Solutions with HVR-MRC1K (Optional)
- Picture Profile™
- Smooth WB (White Balance) & WB Shift
- Smooth Slow Rec

MRP Rs. 3,25,000/-



HXR-NX5P

Digital HD Video Camera Recorder

Full HD
1080

Debut of the NXCAM Camcorder HXR-NX5
Heralding new standards in content creation

- Three 1/3 Exmor CMOS Sensor™
- Sony-exclusive High-performance "G-Lens"
- Wide Angle: 29.5mm at 16:9 Video
- Six-blade Iris with built-in ND Filters
- Location Simplification with Cutting-edge GPS Technology
- Shoot and Walk with the New Active SteadyShot
- The Revolutionary AVCHD Format
- Loss-less Audio Recording Capability through Dolby Digital or Linear PCM Stereo
- MPEG-2 for SD (Standard Definition) Recording format
- Supplied Content Management Utility (CMU) Software for ease of ingesting and editing



MRP Rs. 3,00,000/-



HD MOVIE

		AVCHD	AVCHD	AVCHD	AVCHD
		24Mbps (max) FX mode	17Mbps (avg) FH mode	9Mbps (avg) HQ mode	5Mbps (avg) LP mode
Linear PCM 2ch	1GB	4 min	6 min	10 min	15 min
	2GB	10 min	10 min	20 min	35 min
	4GB	20 min	25 min	45 min	70 min
	8GB	40 min	55 min	95 min	150 min
	16GB	85 min	110 min	190 min	300 min
	32GB	170 min (2h 50m)	225 min (3h 45m)	385 min (6h 25m)	605 min (10h 5m)

SD MOVIE

		SD 9Mbps (avg) HQ mode
Dolby Digital 2ch	1GB	10 min
	2GB	25 min
	4GB	55 min
	8GB	115 min
	16GB	235 min
	32GB	475 min (7h 55m)

DSR-PD177P

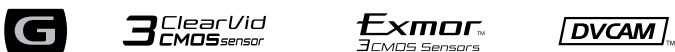
Digital Video Camcorder

Professional quality you can control;
exceptional performance you can depend on.

- Sony's High-performance G Lens
- 20x Optical Zoom
- 1/3 ClearVid "Exmor R" CMOS Sensor™
- Wide Angle: 29.5mm at 16:9 Video
- Natural-touch Lens Operation
- 3.2(8.14 cms) Wide 921k dots XtraFine LCD
- Standard Definition Video Codec / DV Format
- On-handle Zoom Lever and Record Button
- Optical SteadyShot & Smooth Slow Recording
- Digital Still Camera Function with Memory Stick Dual/Memory Stick PRO Duo



MRP Rs. 2,08,000/-



NEX-VG900



FULL
FRAME
SENSOR

Unmatched expressive depth

MRP Rs. 1,79,990/-

35mm film was once a cinematographic standard. Now the 35mm full-frame format is available once again to digital movie makers who want the extensive expressive capabilities it provides. Progressive recording, interchangeable lenses, outstanding audio quality, and comprehensive manual control all contribute to unmatched quality and creative control as well.



A solid foundation for outstanding images

24.3 megapixel Exmor 35mm FULL-FRAME CMOS IMAGE SENSOR

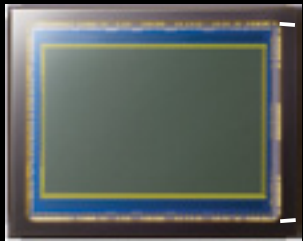
From highly resolved detail to smoothly defocused backgrounds, nothing matches a full-frame sensor for quality. This new 24.3 megapixel full-frame sensor offers superior resolution and 2.33 times the surface area of APS-C size sensors, for beautiful low-noise imagery and gorgeous defocusing effects.

DSLR-class still images with RAW capture capability

The NEX-VG900 is also capable of shooting up to three DSLR-class still images per second, with RAW* output if required to allow the widest possible range of postprocessing options.

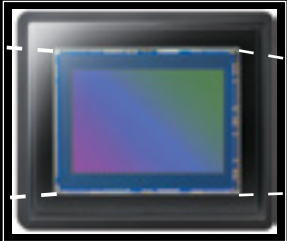


Exmor CMOS Sensor Sony Image Sensor Technology



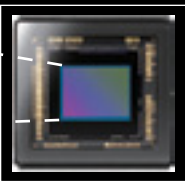
35mm Full Frame Exmor CMOS Sensor
NEX-VG900

2.3 times



APS-C
NEX-VG30

9.7 times



1/1.8 type
Conventional Handycam

Intimate control lets your imagination flow

Precision touch-panel LCD monitor and XGA OLED viewfinder

XGA OLED
Tru-Finder

Fine details and tonal values are faithfully reproduced by a 920,000-dot "Xtra Fine" 3.0 type LCD monitor that facilitates precise manual focusing and also functions as a touch panel for intuitive control. The viewfinder is a crisp, high-contrast XGA OLED "Tru-Finder" type.



Direct keys and assignable control dial

Aperture, shutter speed, and gain adjustments can be easily accessed via externally mounted direct keys. An assignable control dial also enables easy, rapid adjustment of manual exposure settings for hands-on creative control in any situation.

Extended video recording time

With the NEX-VG900 recording times are limited only by the capacity of the memory card used. The supplied NP-FV70 will allow operation for more than two hours, or the optional NP-FV100 battery can be used for more than five hours operation.*

* Times may vary according to the lens used.

Handling optimized for video shooting

Handling is another feature that is essential for high-quality video. The grip offers an intimate fit with the camcorder in shooting position, and low-angle shots can be managed comfortably and stably by gripping from above.



Vegas™ Movie Studio HD Platinum 12

Movie Studio Platinum software is as robust as it is straightforward. Edit video in nearly any format, including AVCHD™ and stereoscopic 3D. With innovative and powerful features for video compositing, color correction, and animated titling, feature-film results are easier to achieve than ever. Use the surround sound mixing tools to create 5.1 soundtracks. Choose from hundreds of professional 2D and 3D video effects and filters. Upload movies to Pixelcast™ and YouTube™, burn to Blu-ray Disc™, or author DVDs using beautifully designed themes and custom menus and graphics. Interactive Show Me How tutorials guide you through step-by-step processes so you can get started fast.

A-mount lenses for extensive visual potential

Use full frame A-mount lenses with supplied LA-EA3 Adaptor



LA-EA3

The extensive and varied selection of Sony A-mount lenses that is already available, including spectacular G-Lens and Zeiss models, can add valuable expressive options to your cinematographic vocabulary. The supplied LA-EA3 adaptor means that full-frame A-mount lenses can be used as well, providing a comprehensive variety of creative tools for expressive movie making.

* Autofocus not available with STF or teleconverter lenses.



Full Frame lens variety



Vario-Sonnar T*
24-70mm F2.8 ZA SSM
(SAL2470Z)
MRP Rs. 1,19,990/-



Planar T*
85mm F1.4 ZA
(SAL85F14Z)
MRP Rs. 1,09,990/-



70-300mm
F4.5-5.6 G SSM
(SAL70300G)
MRP Rs. 54,990/-



28-75mm
F2.8 SAM
(SAL2875)
MRP Rs. 49,990/-

Other Full Frame Range

α99

FULL
FRAME
SENSOR

- 24.3-megapixel 35mm full-frame Exmor CMOS sensor
- Advanced integrated BIONZ image processing engine
- Dual AF System (19 + 102 points) — the world's first* AF system with two phase detection AF sensors
- Full HD 60p movie recording in a full-frame sensor camera



MRP Rs. 1,79,990/-

RX 1

FULL
FRAME
SENSOR

- 24.3-megapixel 35mm full-frame Exmor CMOS sensor
- Carl Zeiss® Sonnar T* Lens
- 3.0" / 1,229k dots / Xtra Fine / TFT LCD
- LITHIUM ION NP-BX1
- Multi Interface Shoe



MRP Rs. 1,79,990/-

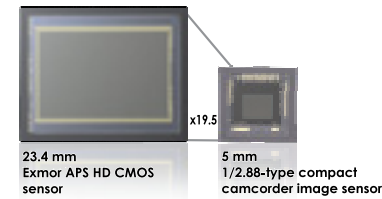
NEX-VG30E

Interchangeable Lens
Handycam



16.1-Megapixel Exmor™ APS HD CMOS Sensor A bigger sensor to create more drama

The NEX-VG20 features a 16.1-megapixel Exmor™ APS HD CMOS Sensor with an imaging area that is 19.5 times larger than the sensors used in conventional camcorders. This enables you to achieve dramatic background defocusing effects that are unmatched by smaller sensors



Uncompromising audio quality

High sound quality is assured by a built-in, high performance Quad Capsule Spatial Array Stereo Microphone with four individual microphone capsules, optimally positioned to achieve a 100% improvement in directivity and a 6dB improvement in S/N ratio.



Microphone capsule structure

MRP Rs. 1,39,990/-



Compatible with all Alpha E-mount Lens



E 16mm F2.8
(SEL16F28)
MRP Rs. 15,990/-



E 18-200mm
F3.5-6.3 OSS
(SEL18200)
MRP Rs. 49,990/-



Sonnar T*
E 24 mm F1.8 ZA
(SEL24F18Z)
MRP Rs. 54,990/-



(SEL1650)
MRP Rs. 19,990/-

* Refer to page 21 for complete range of lens



Mount adaptor for A-mount lens compatibility



LA-EA2
MRP Rs. 22,990/-

Recommended Accessories

XLR Adapter Kit



XLR - K1M MRP Rs. 52,990/-

Battery Video Light



HVL - LE1 MRP Rs. 14,990/-

Tripod



VCT - 80AV MRP Rs. 9,990/-

Lightweight Tripod



VCT - R640 MRP Rs. 1,990/-

Rechargeable Battery Pack



NP - FV100 MRP Rs. 5,990/-

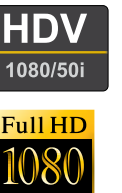
Battery Charger



BC - TRV MRP Rs. 2,990/-

HVR-HD1000P

Digital Video Camcorder

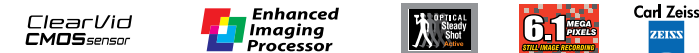


The perfect shoulder-mount choice when it comes to weddings, corporate and sporting events.

- 1/2 Type ClearVid CMOS Sensor™ Imaging System
- Optical 10x Carl Zeiss Vario-Sonnar T* Zoom Lens
- Wide Angle: 29.5mm at 16:9 Video
- Longer Operating Time with Lithium Batteries
- Super SteadyShot™ (Optical) Image Stabilizer
- Economically Designed Handle with Record & Zoom Control
- Super NightShot™
- HDV 1080i/DV Switchable Option
- Down Conversion Playback Capabilities
- Smooth Slow Recording
- Shoulder-Mount Design for Stable Operation



MRP Rs. 1,00,000/-



HD can be recorded on an inexpensive DV Cassette Tape

Video and television technology, as well as viewer preferences, are moving from standard definition (SD) to high definition (HD) - just like black and white television moved to color in the past.

HD has almost twice the number of scanning lines available than SD. This means you can see much sharper detail and finer image quality when your work is viewed on a HD display monitor. The HVR-HD1000P adopts the HDV format for HD recording.

3 ClearVid CMOS sensor

1/2.9 ClearVid CMOS Sensor™

The next generation of Sony imaging sensor, the ClearVid CMOS Sensor used in the HVR-HD1000P camcorder, is quite unique and different from current CMOS technology. The ClearVid CMOS Sensor uses a unique pixel layout rotated 45 degrees to provide high resolution and high sensitivity. This pixel layout technology is also used in higher end professional camcorders. The ClearVid CMOS Sensor, coupled with an Enhanced Imaging Processor™ (EIP), generates stunning images.

Recommended Storage 5DVM60R3 J



Recording Time : 60 Minutes

Recommended Accessories

Rechargeable Twin Battery Pack



2NP-F970/B MRP Rs. 18,000/-

AC Adaptor / Charger / Battery



ACC-L1BP MRP Rs. 21,000/-

Battery Video Light



HVL-LBPB MRP Rs. 39,000/-

HXR-MC1500P
Digital Video Camcorder



Professional Shoulder-mount shooting style with an affordable file-based workflow

- Sony “G” Lens with 12x Optical Zoom
- 1/4 “Exmor R” CMOS Sensor™
- Wide Angle: 29.8mm at 16:9 Video
- The Revolutionary AVCHD File Format & MPEG-2
- Efficiency and Operability on 32 GB Internal Memory
- 7.1MP Still Image
- Optical SteadyShot (Active Mode)
- Large lens ring controls
- Stereo Microphone

MRP Rs. 90,000/-



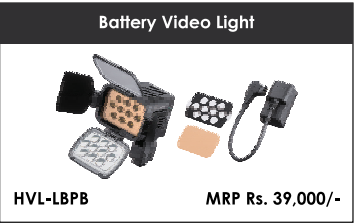
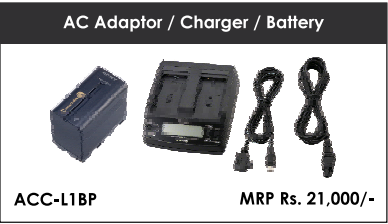
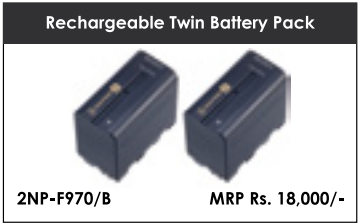
HXR-MC1500P
HD movie (w / 2ch Audio)

	AVCHD 24M (FX) (1920 x 1080i)	AVCHD 17M (FH) (1920 x 1080i)	AVCHD 9M (HQ) (1440 x 1080i)	AVCHD 5M (LP) (1440 x 1080i)
2 GB Memory Card	10 min	10 min	25 min	45 min
4 GB Memory Card	20 min	25 min	55 min	95 min
8 GB Memory Card	40 min	55 min	115 min	195 min
16 GB Memory Card	85 min	115 min	230 min	395 min
32 GB Memory Card	175 min	230 min	465 min	790 min
32 GB Internal Memory	180 min	230 min	467 min	797 min

Supplied Editing Software

- Video Camera Application
- Picture Motion Browser

Recommended Accessories



DCR-SD1000E
Digital Video Camcorder



Professional quality you can control; exceptional performance you can depend on.

- Sony “G” Lens with 12x Optical Zoom
- 1/4 “Exmor R” CMOS Sensor™
- Wide Angle: 36.5mm at 4:3 Video
- Standard Definition Video Codec MPEG2-PS
- Efficiency and Operability on 32 GB Internal Memory
- 7.1MP Still Image
- Optical SteadyShot (Active Mode)
- Large lens ring controls
- Stereo Microphone

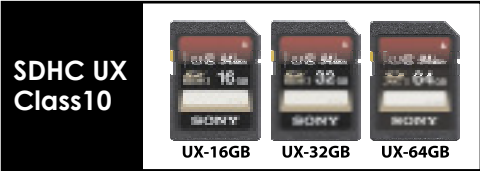
MRP Rs. 69,000/-



HXR-MC1500P / DCR-SD1000E
SD movie (w / 2ch Audio)

	STD 9M (HQ)
2 GB Memory Card	25 min
4 GB Memory Card	55 min
8 GB Memory Card	115 min
16 GB Memory Card	235 min
32 GB Memory Card	475 min
32 GB Internal Memory	482 min

Recommended Flash Memory



Specification Comparison Chart

Model	MRP Rs.	Video Resolution	Movie Format	Media Storage Type	Still Picture Resolution	Optical / Digital Zoom Ratio	Wide Angle	Lens Type	Sensor Size	Audio Format	Microphone	Built in LCD Monitor	Mic. Input	Component Video Out	HDMI Out
DCR-SD1000E	69,000/-	Standard Definition	MPEG2	Internal 32 GB + Memory Stick / SD card	7.1 MEGA PIXELS Ultra-Macro Recording	12x / 160x	36.5 mm at 4:3 video	G	1/4 "EXMOR R" CMOS™	Dolby Digital 2ch.	Supplied (ECM PS1)	2.7(6.87cms) Touch Panel	Yes (Stereo Minijack)	No	No
HXR-MC1500P	90,000/-	Full HD 1080	AVCHD / MPEG2	Internal 32 GB + Memory Stick / SD card	7.1 MEGA PIXELS Ultra-Macro Recording	12x / 160x	29.8 mm at 16:9 video	G	1/4 "EXMOR R" CMOS™	Dolby Digital 2ch., 16 Bit, 48 KHz (for HD & SD)	Supplied (ECM PS1)	2.7(6.87cms) Touch Panel	Yes (Stereo Minijack)	Yes	Yes
DSR-PD177P	2,08,000/-	Standard Definition	DVCAM / DV (PAL)	MiniDV	N.A	20X	29.5 mm at 16:9 video	G	3-Chip 1/3 Type "EXMOR R" CMOS™	Linear PCM(2ch)	Built in Stereo Microphone	3.2(8.14cms)Xtra Fine LCD™	XLR 3 pin (female)	No	No
HVR-HD1000P	1,00,000/-	Full HD 1080	HDV1080/50i	MiniDV	6.1 MEGA PIXELS Ultra-Macro Recording	10X	40 mm at 16:9 video	Carl Zeiss ZEISS	1/2.9 ClearVid CMOS Sensor	Linear PCM(2ch)	Supplied (ECM PS1)	2.7(6.87cms) Touch Panel	Yes (Stereo Minijack)	Yes	Yes
NEX-VC30	1,39,990/-	Full HD 1080	AVCHD	Memory Stick	16.1 MEGA PIXELS Ultra-Macro Recording	18-200 mm	32.4 mm with SELP18200 lens	Interchangeable Lens (E-mount)	APS-C SENSOR	Dolby® Digital 5.1ch,	Quad Capsule Spatial Array Microphone	3.0(7.63cms) Xtra Fine LCD™	*Yes (Stereo Minijack)	Yes	Yes
NEX-VG900	1,79,990/-	Full HD 1080	AVCHD	Memory Stick	24.3 MEGA PIXELS Ultra-Macro Recording	N.A	N.A	Interchangeable Lens (A-mount)	FULL FRAME SENSOR	Dolby® Digital 5.1ch, Dolby® Digital 5.1Creator	Quad Capsule Spatial Array Microphone	3.0(7.63cms) Xtra Fine LCD™	*Yes (Stereo Minijack)	Yes	Yes
HXR-NX5P	3,00,000/-	Full HD 1080	AVCHD / MPEG2	Memory Stick / SD Card	N.A	20X	29.5 mm at 16:9 video	G	1/3-type 3 ClearVid CMOS Sensor	Dolby Digital 2ch. / Dolby® Digital 5.1Creator	Built in Stereo Mic/ ECM - XM1 supplied	3.2(8.14cms) type, XtraFine LCD	XLR 3-pin (female)	Yes	Yes
HVR-Z5P	3,25,000/-	Full HD 1080	HDV / DVCAM / DV	MiniDV	N.A	20X	29.5 mm at 16:9 video	G	1/3-type 3 ClearVid CMOS Sensor	Linear PCM(2ch) Linear PCM(2ch)	Built in Stereo Mic/ ECM - XM1 supplied	3.2(8.14cms) type XtraFine LCD	XLR 3-pin female x2ch	Yes	Yes
HVR-Z7P	5,30,000/-	Full HD 1080	HDV / DVCAM / DV	MiniDV + CF Card	N.A	12x	32 mm at 16:9 video	Carl Zeiss ZEISS	1/3-type 3 ClearVid CMOS Sensor	Linear PCM(2ch)	Built in Stereo Mic/ ECM - XM1 supplied	3.2(8.14cms) type XtraFine LCD	XLR 3-pin (female)	Yes	Yes

*XLR 3 pin Optional

Attractive Finance Offers*



*Conditions apply. #Finance at the sole discretion of financier.



*Conditions apply.